

## Han EMC 10 Hood Side Entry PG 29

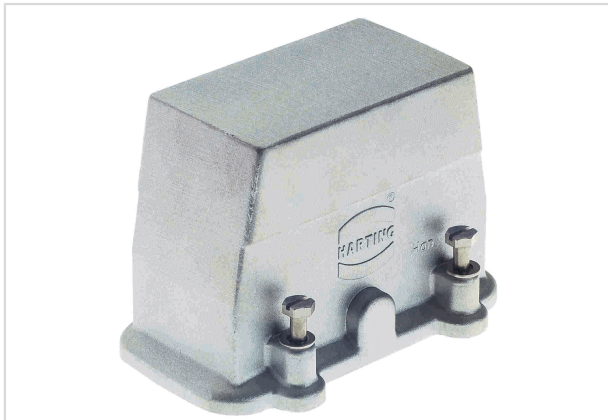


Image is for illustration purposes only. Please refer to product description.

Part number	09 62 010 0542
Specification	Han EMC 10 Hood Side Entry PG 29
HARTING eCatalogue	<a href="https://b2b.harting.com/09620100542">https://b2b.harting.com/09620100542</a>

### Identification

Category	Hoods/Housings
Series of hoods/housings	Han <sup>®</sup> EMC
Type of hood/housing	Hood

### Version

Locking type	Screw locking
Size	10 B
Version	Side entry
Cable entry	1x Pg 29
Field of application	Hoods/Housings for higher EMC requirements

### Technical characteristics

Limiting temperature	-40 ... +125 °C
Degree of protection acc. to IEC 60529	IP65
Type rating acc. to UL 50 / UL 50E	4 12

### Material properties

Material (hood/housing)	Aluminium die-cast
Surface (hood/housing)	Uncoated
Colour (hood/housing)	Unpainted
RoHS	compliant
ELV status	compliant



Pushing Performance

## Material properties

China RoHS	e
REACH Annex XVII substances	No
REACH ANNEX XIV substances	No
REACH SVHC substances	No

## Specifications and approvals

Approvals	DNV GL
UL / CSA	UL 1977 ECBT2.E235076
	CSA-C22.2 No. 182.3 ECBT8.E235076
CE	Yes

## Commercial data

Packaging size	1
Net weight	250 g
Country of origin	Germany
European customs tariff number	85389099
eCl@ss	27440202 Shell for industrial connectors