

Rittal – The System.

Faster – better – everywhere.

Ex Enclosures **Stainless steel, empty** **enclosure with hinged** **door – KEL 9403.600**

Date : Jan 19, 2017

ENCLOSURES

POWER DISTRIBUTION

CLIMATE CONTROL

IT INFRASTRUCTURE

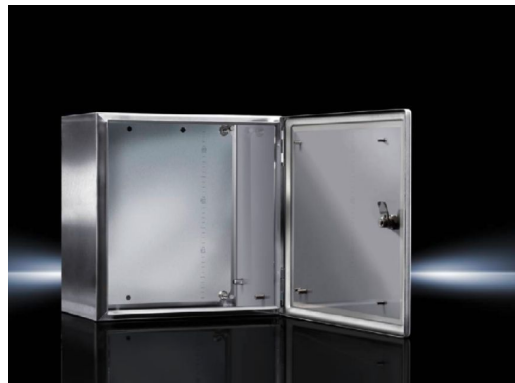
SOFTWARE & SERVICES

FRIEDHELM LOH GROUP



Ex Enclosures Stainless steel, empty enclosure with hinged door – KEL 9403.600

created: 19.01.2017 build on www.rittal.com/us-en



Product description

Applications: Zone 1 and 2 or 21 and 22 to 94/9/EC
Ambient temperature range: -30°C...+80°C
The specified temperatures can be limited by the installed equipment
Protection type to EN 60 079: Equipment protection due to increased safety, equipment protection due to enclosure

Material: Housing: Stainless steel 1.4301 (AISI 304)
Door: Stainless steel 1.4301 (AISI 304), all-round foamed-in silicone seal
Mounting plate: Carbon steel

Surface finish: Housing: Brushed, grain 400, peak-to-valley height < 0.8 µm
Mounting plate: Zinc-plated

**Protection category
IP to IEC 60 529:** IP 66

**Protection category
NEMA:** NEMA 4X

Certificates: IEC Ex PTB 09.0035U: yes
PTB 02 ATEX 1082U: yes

Supply includes: Housing
Door
Mounting plate

Product modification: Starting in August 2016, the surface grinding is changing from 240 grain to 400 grain. The visually finer grinding pattern will enhance the cleaning properties of the housing.

Base material: Stainless steel

Product features	
Dimensions:	Height: 380 mm (15 ") Width: 380 mm (15 ") Depth: 210 mm (8.3 ")
Mounting plate:	Height: 355 mm (14 ") Width: 334 mm (13 ")
Number of cam locks:	1
Lock version:	Cam
No. of locks:	1
Lock Insert:	3 mm double-bit
Packaging unit:	1 pc(s).
Weight/packaging unit:	10.1 kg (22.3 lb.)
EAN:	4028177138742
Customs tariff number:	94032080
ETIM 6.0:	EC002503
ETIM 5.0:	EC002503
eCl@ss 8.0/8.1:	27180502
eCl@ss 7.0/7.1:	27180502
eCl@ss 6.0/6.1:	27180502
eCl@ss 5.1/5.1.4:	27180502
Approvals	
Approvals:	ATEX IEC Ex UL + C-UL
Certificates:	EAC Ex
Declarations:	Manufacturer's declaration