

# Rittal – The System.

Faster – better – everywhere.

## **E-Box EB – EB** **1548.500**

Date : Jan 19, 2017

ENCLOSURES

POWER DISTRIBUTION

CLIMATE CONTROL

IT INFRASTRUCTURE

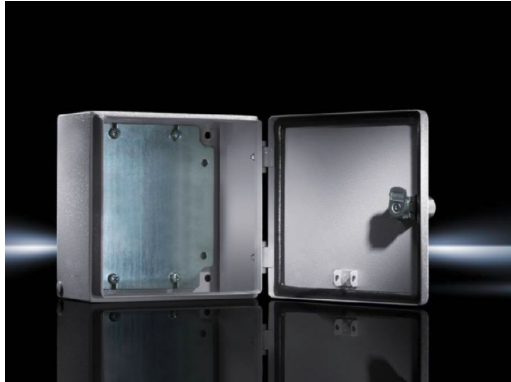
SOFTWARE & SERVICES

FRIEDHELM LOH GROUP



# E-Box EB – EB 1548.500

created: 19.01.2017 build on [www.rittal.com/us-en](http://www.rittal.com/us-en)



## Product description

<b>Material:</b>	Housing and door: Carbon steel, all-round foamed-in PU seal
<b>Surface finish:</b>	Housing and door: Dipcoat primed, powder-coated on the outside, textured paint Mounting plate: Zinc-plated
<b>Color:</b>	RAL 7035
<b>Protection category IP to IEC 60 529:</b>	IP 66
<b>Protection category NEMA:</b>	NEMA 4
<b>IK code:</b>	IK08
<b>Supply includes:</b>	Housing with hinged door 180° hinge Cam lock with 3 mm double-bit insert Mounting plate
<b>Base material:</b>	Carbon steel

## Product features

<b>Dimensions:</b>	Height: 300 mm (12 ") Width: 150 mm (5.9 ") Depth: 120 mm (4.7 ")
<b>Material thickness:</b>	Housing: 1.25 mm (0.05 ") Door: 1.25 mm (0.05 ") Mounting plate: 2 mm (0.08 ")

<b>Mounting plate:</b>	Height: 285 mm (11 ") Width: 125 mm (4.9 ")
<b>Lock version:</b>	Cam
<b>No. of locks:</b>	1
<b>Lock Insert:</b>	3 mm double-bit
<b>Packaging unit:</b>	1 pc(s).
<b>Weight/packaging unit:</b>	3 kg
<b>EAN:</b>	4028177251687
<b>Customs tariff number:</b>	94032080
<b>ETIM 6.0:</b>	EC002713
<b>ETIM 5.0:</b>	EC000261
<b>eCl@ss 8.0/8.1:</b>	27180101
<b>eCl@ss 7.0/7.1:</b>	27180101
<b>eCl@ss 6.0/6.1:</b>	27180101
<b>eCl@ss 5.1/5.1.4:</b>	27180102

## Approvals

<b>Approvals:</b>	Bureau Veritas C-UL CSA Lloyds Register of Shipping Russian Maritime Register of Shipping TÜV UL
<b>Certificates:</b>	EAC IK-Code
<b>Declarations:</b>	Declaration of conformity