

## Han 16HPR-HSM1-SL-M32

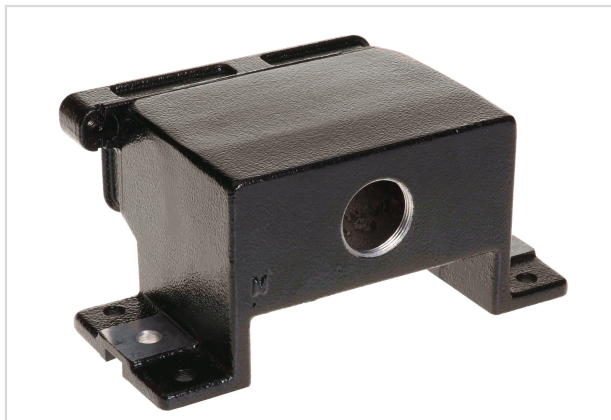


Image is for illustration purposes only. Please refer to product description.

Part number	19 40 016 0912
Specification	Han 16HPR-HSM1-SL-M32
HARTING eCatalogue	<a href="https://b2b.harting.com/19400160912">https://b2b.harting.com/19400160912</a>

### Identification

Category	Hoods/Housings
Series of hoods/housings	Han® HPR
Type of hood/housing	Surface mounted housing
Description of hood/housing	Horizontal version

### Version

Locking type	Screw locking
Size	16 B
Version	Top entry
Cable entry	1x M32
Field of application	Hoods/housings for harsh outdoor environments

### Technical characteristics

Tightening torque (screw locking)	4 Nm
Limiting temperature	-40 ... +125 °C
Degree of protection acc. to IEC 60529	IP65
	IP68
	IP69 / IPX9K acc. to ISO 20653
Type rating acc. to UL 50 / UL 50E	4
	4X
	12

### Material properties

Material (hood/housing)	Aluminium die-cast
	Corrosion resistant



Pushing Performance

## Material properties

Surface (hood/housing)	Powder-coated
Colour (hood/housing)	RAL 9005 (jet black)
Material (seal)	NBR
Material (locking)	Stainless steel
RoHS	compliant
ELV status	compliant
China RoHS	e
REACH Annex XVII substances	No
REACH ANNEX XIV substances	No
REACH SVHC substances	No

## Specifications and approvals

Approvals	DNV GL
UL / CSA	UL 1977 ECBT2.E235076 CSA-C22.2 No. 182.3 ECBT8.E235076
CE	Yes

## Commercial data

Packaging size	1
Net weight	1,139 g
Country of origin	Germany
European customs tariff number	85389099
eCl@ss	27440202 Shell for industrial connectors