

Han K6/12 M Crimp

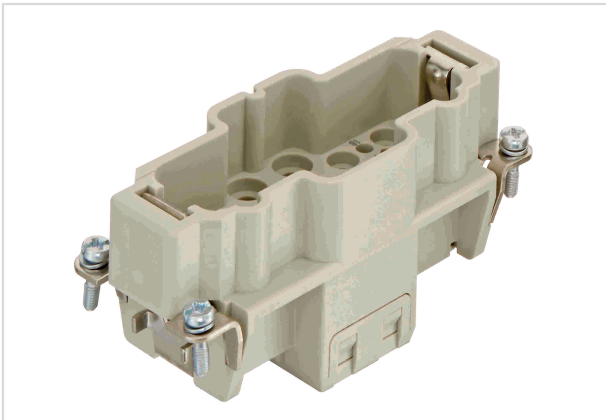


Image is for illustration purposes only. Please refer to product description.

Part number	09 38 018 3002
Specification	Han K6/12 M Crimp
HARTING eCatalogue	https://b2b.harting.com/09380183002

Identification

Category	Inserts
Series	Han-Com [®]
Identification	Han [®] K 6/12

Version

Termination method	Crimp termination
Gender	Male
Size	16 B
Number of contacts	6
Additional contacts	+ 12 additional signal contacts
PE contact	Yes
Details	Please order crimp contacts separately. Please order coding pins separately.

Technical characteristics

Conductor cross-section	1.5 ... 6 mm ² 0.14 ... 2.5 mm ² Signal
Wire outer diameter	≤5 mm
Rated current	40 A
Rated voltage	690 V
Rated impulse voltage	8 kV
Pollution degree	3
Rated current (signal)	10 A



Technical characteristics

Rated voltage conductor-earth (signal)	230 V
Rated voltage conductor-conductor (signal)	400 V
Rated impulse voltage (signal)	4 kV
Pollution degree (signal)	3
Insulation resistance	$>10^{10} \Omega$
Limiting temperature	-40 ... +125 °C
Mating cycles	≥ 500

Material properties

Material (insert)	Polycarbonate (PC)
Colour (insert)	RAL 7032 (pebble grey)
Material flammability class acc. to UL 94	V-0
RoHS	compliant
ELV status	compliant
China RoHS	e
REACH Annex XVII substances	No
REACH ANNEX XIV substances	No
REACH SVHC substances	No

Specifications and approvals

Specifications	EN 60664-1 IEC 61984
Approvals	DNV GL

Commercial data

Packaging size	1
Net weight	58.69 g
Country of origin	Germany
European customs tariff number	85366990
eCl@ss	27440205 Contact insert for industrial connectors