



Figure similar

Enclosed soft starter, Controller 3RW40766BB34, Std duty rating 125HP @200V, Std duty current rating 385A Control voltage 115Vac Combination type, 600Amp fusible disconnect, Enclosure type NEMA 3/3R Weather proof outdoor use

product brand name
design of the product
special product feature

Class 74
Enclosed soft starter with fusible disconnect switch
Control transformer, built-in overload relay and bypass contactor included.

General technical data

weight [lb] 317 lb
Height x Width x Depth [in] 90 × 40 × 20 in
touch protection against electrical shock NA for enclosed products
installation altitude [ft] at height above sea level maximum 6560 ft
ambient temperature [°F]
 • during storage -22 ... +149 °F
 • during operation -4 ... +104 °F
ambient temperature
 • during storage -30 ... +65 °C
 • during operation -20 ... +40 °C
country of origin USA

Power and control electronics

manufacturer's article number of soft starter [3RW40766BB34](#)
number of poles for main current circuit 3
design of power semiconductors (thyristors) for soft starter control 2 controlled phases
operating range factor supply voltage rated value 0.85 ... 1.1
operating range factor of control voltage rated value 0.85 ... 1.1
operating condition for standard duty Class 10, standard-compliant startup
operating condition for severe duty Class 20 severe duty (350% of motor FLA for 20 seconds)

Features and functions

ramp-up (soft starting)/ramp-down (soft stop) Yes
starting voltage [%] 40 ... 100 %
stopping voltage [%] 40 ... 100 %
voltage ramp Yes
ramp-up time 0 ... 20 s
ramp-down time 0 ... 20 s
torque control No
adjustable current limitation Yes
creep speed in both directions of rotation No
pump ramp down No
integrated bypass contact system Yes
external isolation contactor No
intrinsic device protection Yes
overload protection Yes
trip class CLASS 5 / 15 / 20

reset function	Manual, automatic and remote
remote reset function	No
thermistor motor protection	No
inside-delta circuit	No
breakaway pulse	No
DC braking	No
combined braking	No
motor heating	No
configuration of control input 1	ON / OFF
configuration of control input 2	NA
configuration of control input 3	NA
configuration of control input 4	NA
configuration of relay output 1	ON / RUN
configuration of relay output 2	BYPASSED
configuration of relay output 3	OVERLOAD / FAILURE
configuration of relay output 4	NA
display version	4 LEDs
operating measured value display	No
product extension optional human machine interface module	No
type of communication optional	None
error logbook	No
event list	No
slave pointer function	No
trace function	No
number of parameter sets	1
engineering software (Soft Starter ES)	No
disconnecter functionality	Yes

Contactor

size of contactor	NA
-------------------	----

Coil

type of voltage of the control supply voltage	AC
control supply voltage	
• at AC at 50 Hz rated value	115 V
• at AC at 60 Hz rated value	115 V

Disconnect Switch

response value of switch disconnecter	600A / 600V
design of fuse holder	Class R fuse clips
operating class of the fuse link	Class R

Enclosure

degree of protection NEMA rating	3, 3R
degree of protection NEMA rating of the enclosure	NEMA 3/3R
design of the housing	Weather proof for outdoor use
type of cooling	None

Mounting/wiring

mounting position	Vertical
fastening method	Surface mounting and installation
wire length between motor starter and motor maximum	300 m
type of electrical connection for supply voltage line-side	Box lug
type of connectable conductor cross-sections at line-side at AWG cables single or multi-stranded	2x (3/0 ... 500 kcmil) or 2x (4/0 ... 500 kcmil)
temperature of the conductor for supply maximum permissible	75 °C
material of the conductor for supply	AL or CU
type of electrical connection for load-side outgoing feeder	Box lug
tightening torque [lbf-in] for load-side outgoing feeder	180 ... 195 lbf-in
type of connectable conductor cross-sections at AWG cables for load-side outgoing feeder single or multi-stranded	3/0 ... 600 kcmil (front only) or 250 ... 500 kcmil (back only) or 2x 500 kcmil (both front & back) AWG
temperature of the conductor for load-side outgoing feeder maximum permissible	75 °C
material of the conductor for load-side outgoing feeder	CU
type of electrical connection for auxiliary and control circuit	Screw-type terminals
tightening torque [lbf-in] for auxiliary and control contacts	7 ... 10 lbf-in

with screw-type terminals
 type of connectable conductor cross-sections at AWG
 cables for auxiliary and control contacts
 temperature of the conductor for auxiliary and control
 contacts maximum permissible
 material of the conductor for auxiliary and control contacts

2x (20 ... 14 AWG)

75 °C

CU

Short-circuit current rating

design of the fuse link for short-circuit protection of the
 main circuit required
 certificate of suitability

10kA@600V (Class H or K); 100kA@600V (Class R or J)

NEMA ICS 2; UL 508A

Further information

Industrial Controls - Product Overview (Catalogs, Brochures,...)

www.usa.siemens.com/iccatalog

Industry Mall (Online ordering system)

<https://mall.industry.siemens.com/mall/en/us/Catalog/product?mlfb=US2:74FS36DFAF>

Service&Support (Manuals, Certificates, Characteristics, FAQs,...)

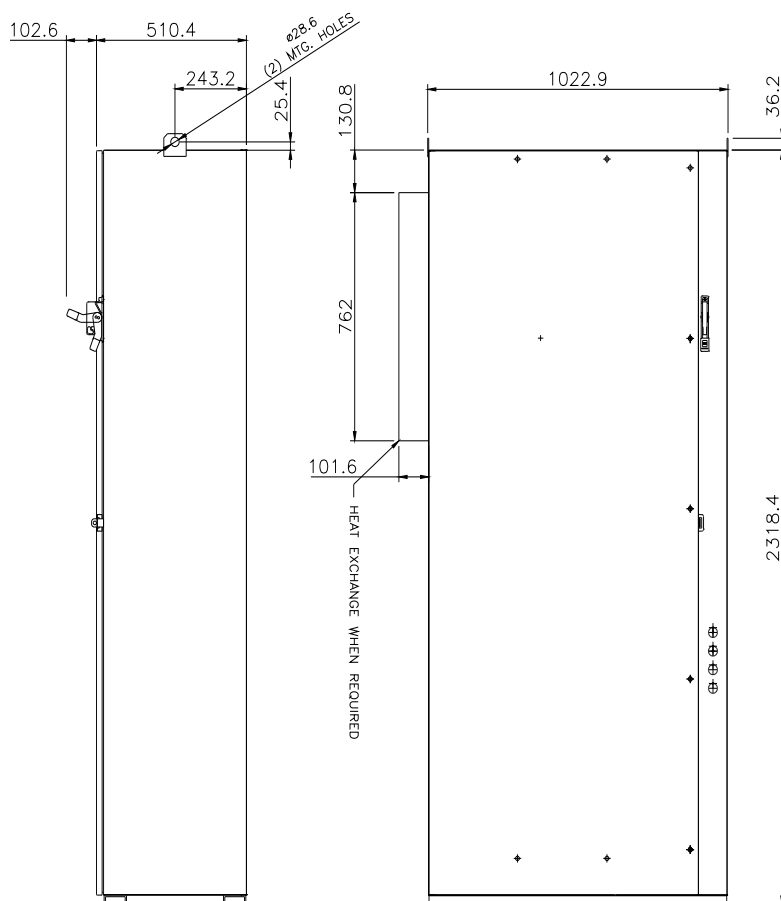
<https://support.industry.siemens.com/cs/US/en/ps/US2:74FS36DFAF>

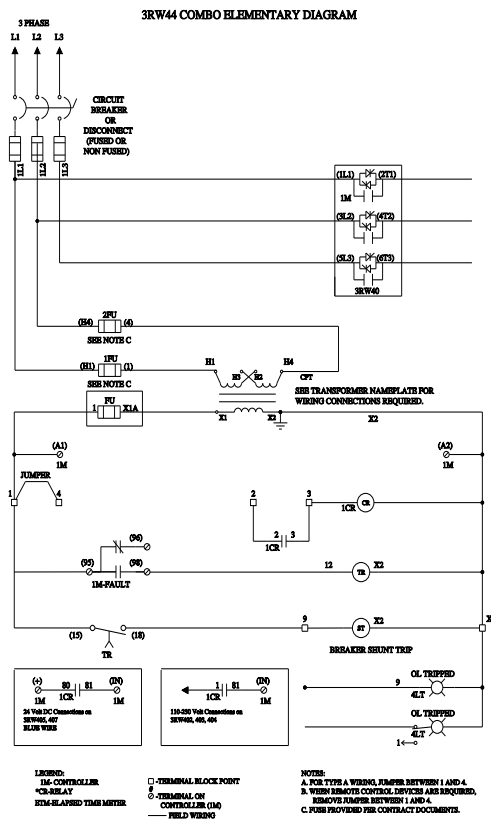
Image database (product images, 2D dimension drawings, 3D models, device circuit diagrams, EPLAN macros, ...)

http://www.automation.siemens.com/bilddb/cax_de.aspx?mlfb=US2:74FS36DFAF&lang=en

Certificates/approvals

<https://support.industry.siemens.com/cs/US/en/ps/US2:74FS36DFAF/certificate>





D69015H39

last modified:

1/25/2022