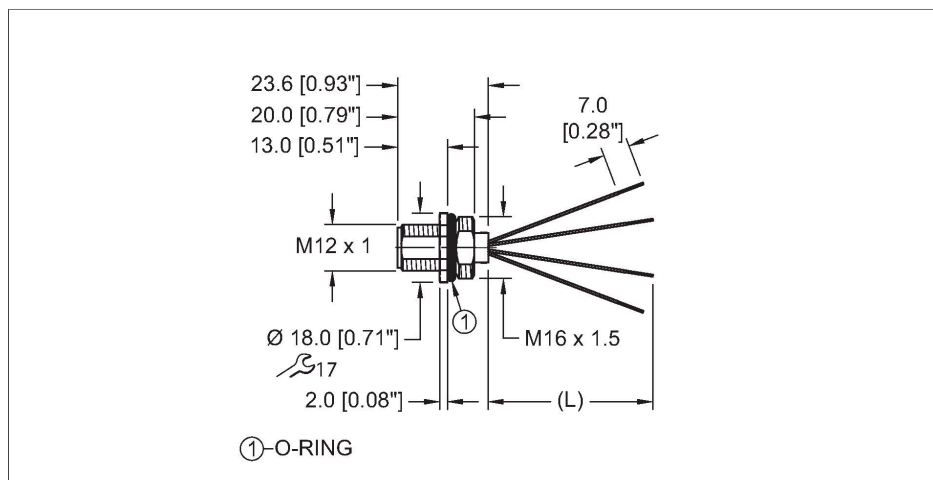


# FS46PT-1/M16

## Power Receptacle – Front Mount



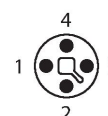
### Features



- M12-Stecker, T-codiert, 4-polig
- Conductor length: 1 m

### Contact assignment

Connector A



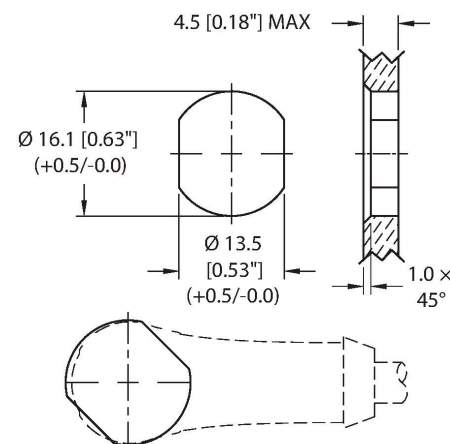
### Technical data

Type	FS46PT-1/M16
ID no.	U2-28483
Connector A	Male, M12 × 1, T-code
Design specification	Acc. to IEC 61076-2-111
Number of Pins	4
Contacts	Brass, CuZn, Gold-plated
Contact carriers	Plastic, PA, Black
Connector seal	Plastic
Housing material/finish	Brass, CuZn, Nickel-plated
Tightening torque (range)	0.4 ... 1 Nm (note max. torque of mating connector!)
Mounting orientation	Front mount
Panel seal	O-ring, NBR
Mounting thread	M16x1.5
Receptacle mounting torque	2.5...7.3 Nm
Mechanical life	> 100 Mating cycles
Pollution degree	3
Protection class (When coupled)	IP68
	NEMA: 1, 3, 4, 6P
<b>Stranded wires</b>	
Total number of conductors	4
Cable length (L)	1 m (+50mm or 4% of length/-0.0, Whichever is greater)
Conductor material	TC (tinned copper)

### Circuit Diagram



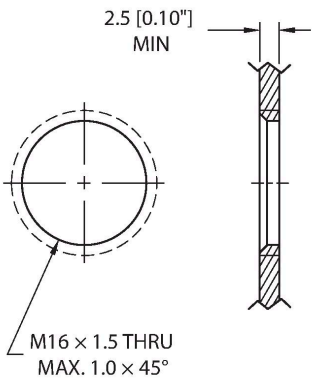
### Mounting hole - Through



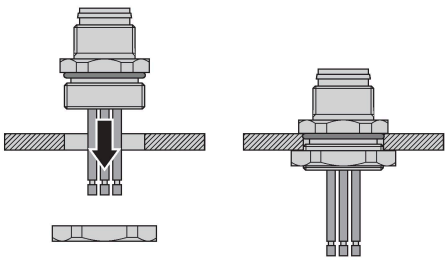
Technical data

Conductor insulation material	PVC
Conductor size	4 x 16 AWG [Similar to 1.50 mm²]
Conductor colors	BN, WH, BU, BK
Electrical properties at +20 °C	
Rated voltage	63 V
Current	12 A
Mechanical and chemical properties	
Ambient temperature range (static)	-40 °C...+85 °C
Approval	
Note	
- CAUTION: RISK OF ELECTRICAL SHOCK. DO NOT DISCONNECT UNDER LOAD.	
- We reserve the right to make technical alterations without prior notice.	

Mounting hole - Threaded



Front panel mounting



Accessories

**DECAL,9-CLRS,RECEPT+BOXES,EURO(QTY1)**      **100008955**

1 decal sticker containing 9 different color sets of 11 decals to color code a sensor, junction block port, cable end, or receptacle. 5ct 4x9mm rectangles, 4ct 8x19mm rectangles, 1ct 27mm ID ring, 1ct 20mm ID ring.

Accessories

**LOCKNUT-M16 (10/BAG)**      **A9579**

Locknut, M16, Brass, Nickel-plated, 10 per bag