

Rittal – The System.

Faster – better – everywhere.

RiZone Appliance IP node license – DK 7990.308

Date : Jan 22, 2017

ENCLOSURES

POWER DISTRIBUTION

CLIMATE CONTROL

IT INFRASTRUCTURE

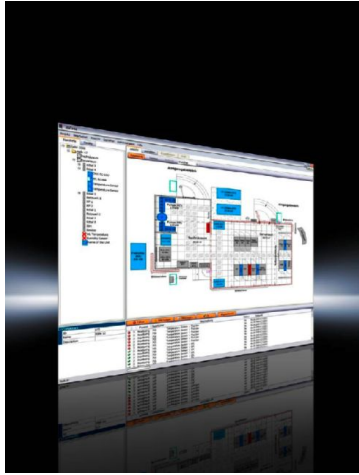
SOFTWARE & SERVICES

FRIEDHELM LOH GROUP



RiZone Appliance IP node license – DK 7990.308

created: 22.01.2017 build on www.rittal.com/us-en



Product description

Description:	The flexible RiZone license model allows optimum adaptation to any project size, while at the same time allowing the opportunity to grow with the data center. The volume licenses for the IP nodes are graduated from 10 to 1000 nodes and may be adapted precisely to the size of the data center. One node license is required for each active component or other SNMP-compatible component to be covered.
---------------------	---

Product features

Version:	RiZone graphics tool
For number of IP nodes:	100
Console licenses included:	8
Packaging unit:	1 pc(s).
EAN:	4028177665866
Customs tariff number:	85234920
ETIM 6.0:	EC000501
ETIM 5.0:	EC000501
eCl@ss 8.0/8.1:	19240201
eCl@ss 7.0/7.1:	19240201

eCl@ss 6.0/6.1:	19240201
------------------------	----------

eCl@ss 5.1/5.1.4:	27189253
--------------------------	----------

2017 © Rittal Corporation