

# Panasonic CONNECT

New Digital Wireless Microphone System for  
Hybrid Conferences in Education and Business



Panasonic 1.9 GHz Digital Wireless Microphone System

# A High Quality Digital Wireless Microphone System for Highly Productive Lectures & Meetings

We know that regardless of whether your end user is teaching a class, making a presentation, or participating in hybrid in-person/virtual conference or meeting, the technology is always second to the content. Panasonic developed this product line with end user feedback, featuring simplified and intuitive controls so the end user can be confident that the technology will work the way they want it to and not get in the way of what they want to say.

1.9GHz

Digital Wireless Microphone System





## Optimized for Dialog Clarity & Speech Intelligibility

Panasonic's 1.9 GHz Digital Wireless Microphone System was developed for higher education and enterprise in mind by focusing on a wider frequency range (100 Hz – 15 kHz) vs. the human voice with built-in noise suppression technology and a low cut filter. The This provides – superior dialog clarity, wirelessly.

## FCC Compliant Wireless Transmission (1.9 GHz)

Why settle for wireless transmission on the shrinking UHF spectrum? Panasonic's digital wireless microphone system operates in the 1.9 GHz band using the DECT protocol, which is out of scope for current and near-future FCC restrictions on wireless spectrum. 1.9GHz is within FCC compliance, and is relatively low in signal saturation, providing free and clear operation.

## Adjustable Range Antenna

Panasonic's wireless microphone antenna features an adjustable range with four settings so that you can cover just the area where wireless microphones are needed instead of blasting your facility or campus with wireless signals past the location of the room the gear is being used in.

## Durable, Backed by a 3-Year Warranty

Panasonic has a legacy of developing and delivering ruggedized products to meet the needs of education and business, and our digital wireless microphone system is no exception. Don't let the weight of the product fool you – just like Panasonic's Toughbook laptop computers, this digital wireless microphone system was developed to be lightweight yet stand up to higher education and corporate as well as rental and staging environments.

### Product Lineup



Wireless Handheld Microphone  
**WX-ST200**



Lavalier Microphone+ Wireless Bodypack  
**WX-ST400**



Lavalier Microphone  
**WX-SM410**



Desktop Charging Console  
**WX-SZ200**

NEW



18 inch Gooseneck Microphone (for WX-ST600 only)  
**WM-KG645**

NEW



Wireless Desktop Transmitter (for Gooseneck Microphone)  
**WX-ST600**

NEW



Wireless Microphone (Boundary type)  
**WX-ST700**

NEW



Networked Desktop Charger  
**WX-SZ600**



Wireless Antenna  
**WX-SA250**



Wireless Receiver (2 ch)  
**WX-SR202**



Wireless Receiver (4 ch)  
**WX-SR204**



Expansion Wireless Receiver (4 ch)  
**WX-SE200**

NEW



Wireless Receiver (2 ch)  
**WX-SR202DN**

NEW



Wireless Receiver (4 ch)  
**WX-SR204DN**

NEW



Expansion Wireless Receiver (4 ch)  
**WX-SE200DN**



# Wireless Microphone System

This system is engineered from the ground up to provide a consistent audio experience regardless of whether your end users are physically in the room or attending a meeting or class remotely. Panasonic's 1.9 GHz Digital Wireless Microphone System solves several problems with today's hybrid in-person/remote experiences.

## ● High-Quality Sound

Panasonic's new wireless gooseneck and boundary unidirectional microphones provide clear sound capture and the DECT wireless system ensures dialog clarity even in hybrid conferences with a large number of attendees.

These two new wireless microphone additions include two modes of operation – Always On (for a hands free experience) or Push-To-Talk (for conferences & panels with larger active participants) In addition, Panasonic has included a smart buffer which prevents the beginning of the speech from being cut off when the user starts to speak from standby with the push-to-talk button prevents the beginning of the conversation from being cut off.

## ● Microphone and PTZ Camera Linkage

Panasonic's new wireless gooseneck and boundary microphones\* can be linked to PTZ cameras by upgrading the receiver and antenna.

Used in conjunction with the Visual Preset Software Key AW-SF300\*\*, which allows management and control of any number of presets for PTZ cameras, the AW-SF300 can detect the audio signal level of the wireless microphone and automatically direct the camera to a speaker registered at a preset point.

\*PTZ camera linkage is compatible with all Panasonic 1.9Ghz wireless microphones currently on the market.

\*\*Visual Preset Software Key to use the AW-SF300, the free software PTZ Control Center must be downloaded in advance. Visual Preset Software Key AW-SF300 is compatible with all Panasonic PTZ cameras currently on the market.

## ● Long Operating Time

Panasonic's new wireless gooseneck and boundary microphones can be powered by two AA alkaline or NI-MH rechargeable batteries. Regardless of which type of battery you choose, these wireless microphones can last approx. 13 hours before needing to be charged, which is basically a full day of meetings. Charge the mics overnight or in-between meetings using Panasonic's WX-SZ600 Networked Charger.



### 18 inch Gooseneck Microphone (for WX-ST600 only)

## WM-KG645

Designed for use with the WX-ST600 wireless tabletop transmitter, this 18 inch gooseneck microphone puts the unidirectional electret microphone at the correct height for the speaker, eliminating the need for them to bend forward.

- Unidirectional electret condenser microphone
- Directional characteristic: Cardioid
- Gooseneck length: 18-5/16 inches (465 mm)
- XLR3-M Cannon Connector (for insertion into WX-ST600 wireless tabletop transmitter)
- Phantom power is supplied by the connected wireless WX-ST600 tabletop transmitter.

### Wireless Desktop Transmitter (for Gooseneck Microphone)

## WX-ST600

1.9 GHz DECT Wireless Tabletop Transmitter designed for the Panasonic WM-KG645 provides stable sound capture and transmission with good sound quality and dialog clarity in a wide area with little interference.

- Designed for Panasonic's 18 inch Gooseneck Microphone
- Two operation modes: Always ON or Push-To-Talk (PTT)
- The talk switch can be used to toggle (ON/OFF) or PTT (talk while held down).
- Talk ON/OFF can also be controlled externally (receiver side).
- 4-level volume indicator
- Battery life: Approx. 13 Hours (Ni-MH AA x 2)
- 3.5 mm audio input (monaural mix) for transmission of external sound sources.

### Wireless Microphone (Boundary type)

## WX-ST700

1.9 GHz DECT Digital Wireless Boundary Microphone provides stable sound capture and transmission with good sound quality and high speech intelligibility in a wide area with little interference.

- Unidirectional electret condenser microphone
- Two operation modes: Always ON or Push-To-Talk (PTT)
- The talk switch can be used to select (ON/OFF) or PTT (talk while held down).
- Talk ON/OFF can also be controlled externally (receiver side).
- 4-level volume indicator
- Battery life: Approx. 13 Hours (Ni-MH AA x 2)
- 3.5 mm audio input (monaural mix) for transmission of external sound sources.

### Networked Desktop Charger

## WX-SZ600

This universal charger can charge any combination of four Panasonic mics and features a network connection for remote monitoring so your IT team doesn't have to run around to physically check all of the rooms at the end of the day in order to ensure the microphones are being charged.

- This charger can charge up to four WX-ST600 or WX-ST700 units simultaneously. Current WX-ST200 and WX-ST400 models can also be charged.
- Contactless charging – no metal leads to align.
- The network function allows the status of each charging slot to be checked remotely using operation software\*\*.

\*\*API available; Control Modules for Crestron, Extron, and Q-SYS also available.

Example 1

## Hybrid In-Person/ Virtual Classrooms

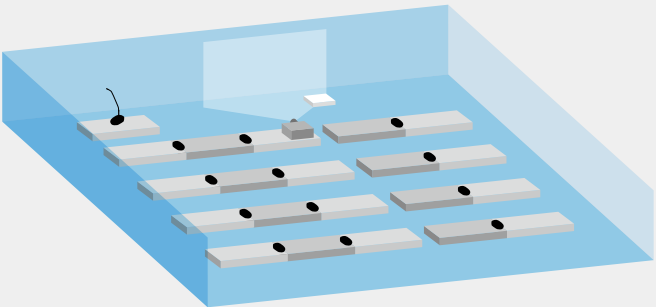
For hybrid lectures in a lecture hall, an instructor can use a gooseneck and wireless boundary microphones at each student's seat. This allows the instructors' voice as well as the students' voice to be heard clearly online, and allows online students to accurately grasp the content of the lecture.



### System Configuration Example

Wireless Desktop Transmitter	WX-ST600	1
Gooseneck Microphone	WM-KG645	1
Wireless Microphone (Boundary type)	WX-ST700	12
Wireless Receiver (4 ch)*	WX-SR204 (WX-SR204DN)	1
Wireless Antenna	WX-SA250	1
Battery Charger	WX-SZ600	4

\*It needs to be set to conference mode.



Example 2

## Board Meetings

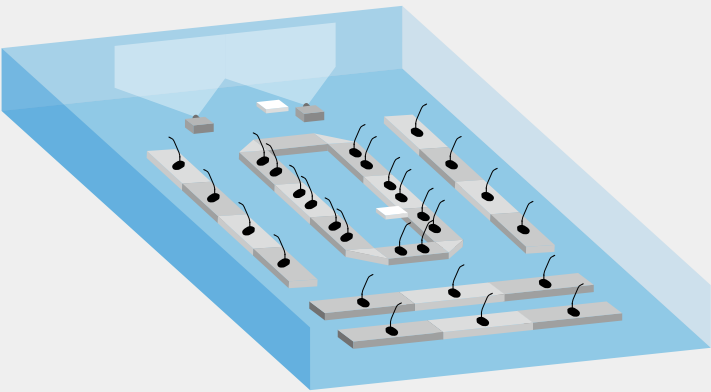
In large hybrid in-person/virtual board meetings with more than 20 people attending in person, it is necessary to ensure that what is said in the conference room is also conveyed to the remote attendees. By placing a gooseneck and wireless transmitter at each participant's seat, the speaker's voice can be heard clearly online, so no important conference remarks are missed.



### System Configuration Example

Wireless Desktop Transmitter	WX-ST600	28
Gooseneck Microphone	WM-KG645	28
Wireless Receiver (4 ch)*	WX-SR204 (WX-SR204DN)	1
Expansion Wireless Receiver*	WX-SE200 (WX-SE200DN)	1
Wireless Antenna	WX-SA250	2
Battery Charger	WX-SZ600	7

\*It needs to be set to conference mode.



## LED Indicators to Visually Check Connection Status and Transmit Volume Level

The WX-ST700 boundary microphone and WX-ST600 wireless transmitter are equipped with LED indicators to visually check the microphone connection status and volume, making it easy to notice a poor connection or sound quality. This allows for safe use during important meetings.

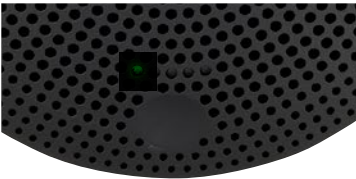
### WX-ST700

1 Charge indicator (USB)



2 Talk indicator

3 Status indicator (Power indicator)



4 Talk indicator



5 Mic input level meter

All off : No input  
On (1 green) : Low input level  
On (2 green) : Appropriate input level  
On (orange) : Close to peak  
On (red) : Peak

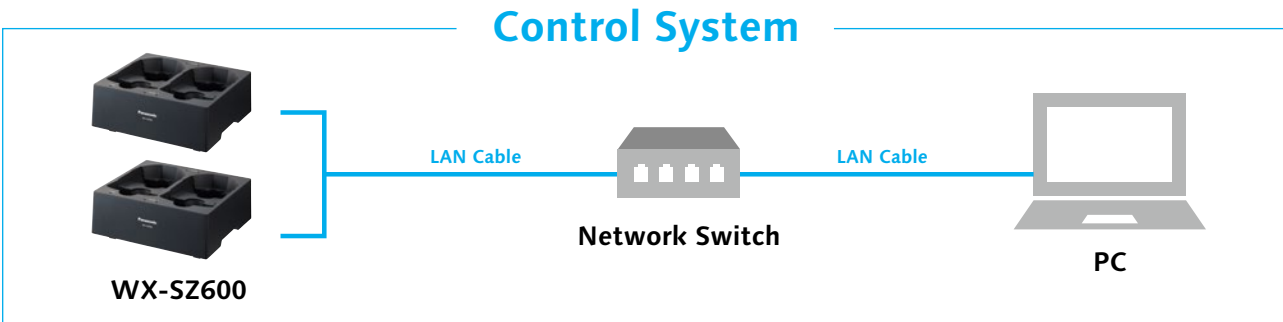


6 Charge indicator (Charger)

## Network Function to Remotely Check Charging Status

The WX-SZ600 charger has network capabilities, allowing users to remotely check the status of each charging slot from an operational support software or via a compatible 3rd party control system\*\*\*.

\*\*\*Crestron, Extron, Q-SYS modules available





# Wireless Receivers



## We Speak Dante and AES67: Introducing New Dante Wireless Microphone Receivers

You asked for them so here they are – Three new wireless microphone receivers with Dante connectivity. All 3 new models feature Dante primary and secondary connections and support for AES67 mode.

Wireless Receiver (2-channel)  
WX-SR202DN



Wireless Receiver (4-channel)  
WX-SR204DN



Expansion Wireless Receiver (4-channel)  
WX-SE200DN



### Wireless Receiver

## WX-SR202DN/ WX-SR204DN

2-channel and 4-channel Dante wireless receivers for use with any of Panasonic's 1.9 GHz DECT wireless microphone transmitters (WX-ST200, WX-ST400, WX-ST600, WX-ST700). Features eight x RJ45 ports for up to eight WX-SA250 antennas (one antenna required to be connected to each receiver).

- WX-SR202DN has two channels for wireless microphones / WX-SR204DN has four channels for wireless microphones
- Dante output has primary and secondary ports, and the audio output can be selected according to the connected devices, with channel-specific output and mixing output as Dante output, and mixing output as analog output.
- Compatible with Dante Domain Manager
- AES67 Mode support
- Eight RJ45 connections for up to eight antennas
- One RJ45 connection for LAN (for control via third party control system)
- WX-SR204DN ONLY: One RJ45 EXT port for expansion receiver

### Expansion Wireless Receiver

## WX-SE200DN

Add up to four additional channels to a four channel wireless microphone system without the need for an additional antenna in the room with this easy to use expansion receiver (WX-SR204DN required).

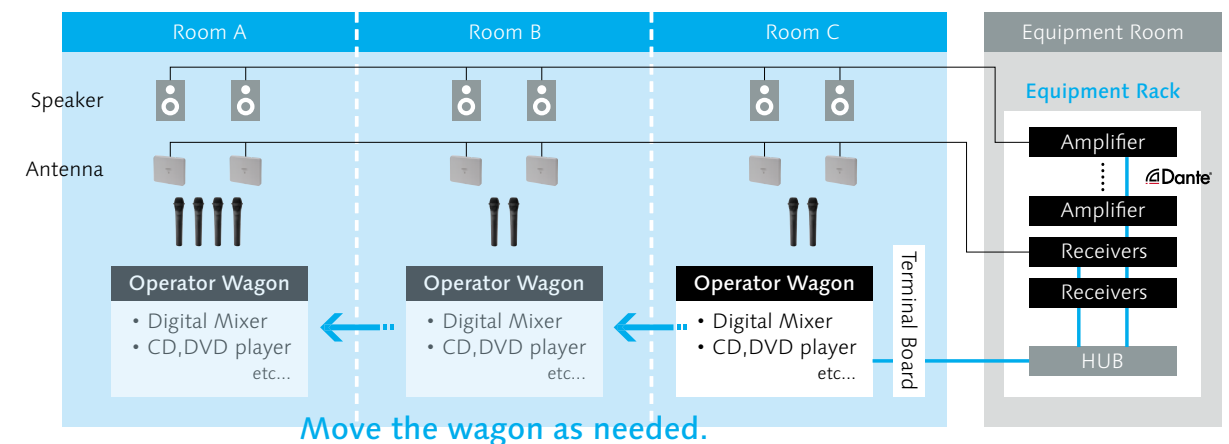
- One RJ45 connection (to "EXT" port on WX-SR204DN four channel receivers).
- Dante output has primary and secondary ports, and the audio output can be selected according to the connected device, with separate channel output and mixing output as Dante output, and mixing output as analog output.
- Compatible with Dante Domain Manager
- AES67 Mode support

## Wire Saving

The advantage of Dante, which transmits signals over LAN cables, is wire saving. Conventional analog lines require a cable for each channel from the wireless receiver to the mixer and from the mixer to the amplifier, but Dante can be operated with only a cable for each receiver and amplifier. This greatly reduces the number of cables required, making multi-channel conferences and lectures easier to handle.

## Split Conference Room Operation with Long-Distance Transmission

Another advantage of Dante is minimal degradation in sound quality even with long-distance transmission. Even in a split conference hall where wireless receivers and amplifiers are all installed in an equipment room far from the conference room to manage multiple conference rooms, Dante can be operated simply and trouble-free by moving the operator wagon for each meeting.



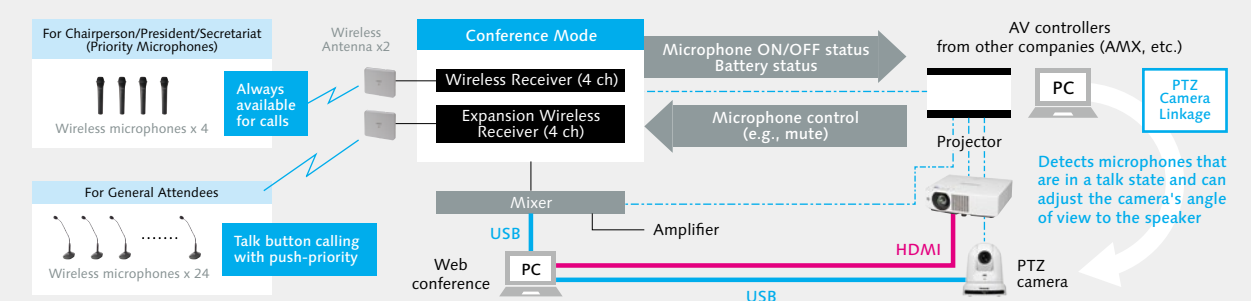
## Conference Mode

Up to 48 microphones can be registered and up to eight microphones can be used simultaneously\*. To prevent confusion due to an increase in the number of speakers during multi-channel operation, priority microphone settings and a microphone restriction function are also provided, allowing even large groups to proceed smoothly with conferences.

\*Requires interlocking with the talk switch.

## 28 wireless microphones (8 microphones used simultaneously)

In conference mode, one wireless receiver (4-channel) can register 24 microphones. When priority microphones are registered, the priority microphones occupy one channel.



Wireless Desktop Transmitter  
(for gooseneck microphone)

WX-ST600



Wireless	Used frequencies	1921.536 MHz to 1928.448 MHz
Antenna	Internal antenna	
Microphone input connector	Phantom power 12 V DC XLR 3 pin (female, XLR-3-11C equivalent) Pin 1: Ground Pin 2: Hot Pin 3: Cold	
Frequency response	100 Hz to 15 kHz	
External input connector	-14 dBV line-in Ø3.5 mm stereo mini jack (Monaural mix)	
Connector for charge (USB Type-C)	USB Type-C (Battery charging and power supply to WX-ST600P) * WX-ST600P can be used when powered by USB Type-C Use a USB power adapter of DC 5 V 500 mA or more for power supply	
Battery type	Rechargeable battery: Ni-MH AA-size battery (sold separately) × 2 Dry-cell battery: alkaline AA-size battery (sold separately) × 2	
Battery operating time [Assuming continuous use at a 25 °C (77 °F) temperature with Panasonic batteries]	Approx. 13 hours (Ni-MH AA-size battery BK-3MCCA)	
Front indicator	Talk indicator, Input level meter (4 steps) Charge indicator (when using the charger)	
Rear indicator	Charge indicator (when charging via USB) Talk indicator, Status indicator	
Operating temperature range	5 °C to 35 °C (41 °F to 95 °F)	
Operating humidity range	10 % to 90 % (no condensation)	
Dimensions	88 mm (W) × 46 mm (H) × 135 mm (D) (3-15/32 inches x 1-13/16 inches x 5-5/16 inches)	
Mass	Approx. 345 g (0.77 lb) (including LR6PA alkaline battery)	
Finish	Black finish	

Gooseneck Microphone (for WX-ST600 only)

WM-KG645



Microphone type	Unidirectional electret condenser microphone
Directional characteristic	Cardioid
Frequency response	40 Hz to 20 kHz
Sensitivity	-40 dB (10 mV) (0 dB=1 V/Pa, 1 kHz)
Output impedance	600 Ω ±30 %
Maximum input sound pressure level	127 dB SPL
Power	12 to 48 V DC Phantom Power, 4 mA
Microphone output connector	XLR 3 pin (male, XLR-3-12C equivalent) No. 1: GND No. 2: HOT No. 3: COLD
Operating temperature range	5 °C to 35 °C (41 °F to 95 °F)
Operating humidity range	10 % to 90 % (no condensation)
Dimensions	465 mm (L) × Ø19 mm (Connector)× Ø12.8 mm (Microphone)(18-5/16 inches x 3/4 inches x 1/2 inches)
Mass	160 g (0.35 lb)
Finish	Black finish

Wireless Microphone (Boundary type)

WX-ST700



Wireless	Used frequencies	1921.536 MHz to 1928.448 MHz
Antenna	Internal antenna	
Microphone type	Unidirectional electret condenser microphone	
Sound collection range	120 degree range symmetrically from the front	
Max SPL	130 dB SPL (Sensitivity setting [SENS L])	
Frequency response	100 Hz to 15 kHz	
External input connector	-14 dBV line-in Ø3.5 mm stereo mini jack (Monaural mix)	
Connector for charge (USB Type-C)	USB Type-C (Battery charging and power supply to WX-ST700P) * WX-ST700P can be used when powered by USB Type-C Use a USB power adapter of DC 5 V 500 mA or more for power supply	
Battery type	Rechargeable battery: Ni-MH AA-size battery (sold separately) × 2 Dry-cell battery: alkaline AA-size battery (sold separately) × 2	
Battery operating time [Assuming continuous use at a 25 °C (77 °F) temperature with Panasonic batteries]	Approx. 13 hours (Ni-MH AA-size battery BK-3MCCA)	
Front indicator	Talk indicator, Input level meter (4 steps) Charge indicator (when using the charger)	
Rear indicator	Charge indicator (when charging via USB) Talk indicator, Status indicator	
Operating temperature range	5 °C to 35 °C (41 °F to 95 °F)	
Operating humidity range	10 % to 90 % (no condensation)	
Dimensions	88 mm (W) × 35 mm (H) × 135 mm (D) (3-15/32 inches x 1-3/8 inches x 5-5/16 inches)	
Mass	Approx. 260 g (0.58 lb) (including LR6PA alkaline battery)	
Finish	Black finish	

Battery charger

WX-SZ600



Power	AC120 V 60 Hz(Included original AC adaptor)
Power consumption	14 W maximum
Charging ports	Maximum of 4
Charging time	Approx. 6 hours for WX-ST200P, WX-ST400P Approx. 10 hours for WX-ST600P, WX-ST700P (assuming external temperature of 25 °C (77 °F), Ni-MH AA-size battery BK-3MCCA)
Display (indicators)	Power indicator [POWER] Charge indicators [CHARGE] (on either charging port)
Network connector	Connector RJ-45
Transmission method	100BASE-TX
Operating temperature range	5 °C to 35 °C (41 °F to 95 °F)
Operating humidity range	10 % to 90 % (no condensation)
Dimensions	Charger 200 mm (W) × 83 mm (H) × 180 mm (D) (7-7/8 inches x 3-9/32 inches x 7-3/32 inches) (except protuberances) AC adaptor 115 mm (W) × 36 mm (H) × 57 mm (D) (4-17/32 inches x 1-13/32 inches x 2-1/4 inches) (except DC cable and power cord)
Mass	Charger Approx. 720 g (1.59 lb) (except AC adaptor and power cord) AC adaptor Approx. 230 g (0.51 lb) (except power cord)
Finish	Charger Black finish

Wireless Receiver (2-channel)

WX-SR202DN



Wireless Receiver (4-channel)

WX-SR204DN



Power	AC120 V 60 Hz
Power consumption	58 W
Frequency response	50 Hz to 15 kHz
Wireless antenna connectors	Maximum connections 8 Connector RJ-45 Compatible cables Cat 5, Cat 5e, or Cat 6 straight (non-crossover) LAN cable
Extension receiver output connector	No. of connectors 0 (WX-SR202DNP) 1 (WX-SR204DNP) Connector RJ-45 Compatible cables Cat 5, Cat 5e, or Cat 6 straight (non-crossover) LAN cable
External input connector	Connector Euroblock connector Input characteristic -10 dBV equilibrium 600 Ω
Mix output connector	Connector Euroblock connector Output characteristic -10 dBV equilibrium 600 Ω S/N 64 dB or more
Dante Primary connector	Connector RJ-45 Connection network Dante network Output type ch1/ch2/Mix (WX-SR202DNP) ch1/ch2/ch3/ch4/Mix (WX-SR204DNP) Indicators LINK/ACT (Status), 1G (Speed)
Dante Secondary connector	Connector RJ-45 Connection network Dante network Output type ch1/ch2/Mix (WX-SR202DNP) ch1/ch2/ch3/ch4/Mix (WX-SR204DNP) Indicators LINK/ACT (Status), 1G (Speed)
Network connector	Connector RJ-45 Transmission method 100BASE-TX
Connector for [SET]	Connector USB micro type B
Display (indicators)	Common Power, Antennas 1 to 8, Sync, Main, Remote Per-channel RF level (5 steps), Audio level/Mute, Microphone Battery, Register
Operating temperature range	0 °C to 45 °C (32 °F to 113 °F)
Operating humidity range	0 % to 90 % (no condensation)
Dimensions	Approx. 420 mm (W) × 44 mm (H) × 250 mm (D) (16-9/16 inches x 1-3/4 inches x 9-13/16 inches) (Not considering rubber feet, knobs, and other protuberances)
Mass	Approx. 2.9 kg (6.39 lb)
Finish	Black finish

Expansion Wireless Receiver (4-channel)

WX-SE200DN



Power	120 V AC, 60 Hz
Power consumption	12 W
Frequency response	50 Hz to 15 kHz
Extension receiver input connector	No. of connectors 1 Connector RJ-45 Compatible cables Cat 5, Cat 5e, or Cat 6 straight (non-crossover) LAN cable
External input connector	Connector Euroblock connector Input characteristic -10 dBV equilibrium 600 Ω
Mix output connector	Connector Euroblock connector Output characteristic -10 dBV equilibrium 600 Ω S/N 64 dB or more
Dante Primary connector	Connector RJ-45 Connection network Dante network Output type ch1/ch2/ch3/ch4/Mix Indicators LINK/ACT (Status), 1G (Speed)
Dante Secondary connector	Connector RJ-45 Connection network Dante network Output type ch1/ch2/ch3/ch4/Mix Indicators LINK/ACT (Status), 1G (Speed)
Network connector	Connector RJ-45 Transmission method 100BASE-TX
Connector for [SET]	Connector USB micro type B Common Power, status
Display (indicators)	Per-channel RF level (5 steps), Audio level/Mute, Microphone Battery, Register
Operating temperature range	0 °C to 45 °C (32 °F to 113 °F)
Operating humidity range	0 % to 90 % (no condensation)
Dimensions	Approx. 420 mm (W) × 44 mm (H) × 250 mm (D) (16-9/16 inches x 1-3/4 inches x 9-13/16 inches) (Not considering rubber feet, knobs, and other protuberances)
Mass	Approx. 2.8 kg (6.17 lb)
Finish	Black finish

# SOFTWARE

## Software for Using Your Devices

This software connects your wireless receiver to a computer with a LAN cable to check the connection and operations of your wireless receiver, wireless antenna and microphone(s)

**Free**

Three programs provide more options when designing your system, configuring the settings and using your devices. Simply connect your system to a computer and you're ready to go.

### Operations Support Software

#### Main Functions

##### System Display

- Shows whether your wireless receiver and antenna are connected
- Shows whether your system is synced
- Allows you to check the signal strength, volume, battery level, etc. of the microphones

##### System Settings

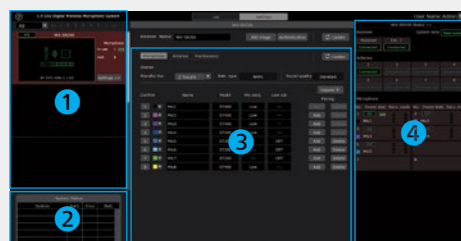
- Allows you to pair microphones and check or delete pairings
- Allows you to select an antenna field (transmitted power)
- Allows you to configure network settings

##### Maintenance

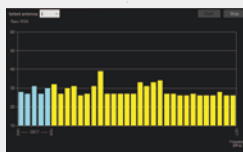
- Maintain the basic spectrum analyzer, DECT slot monitor, walk test logs, software version upgrades, etc.

#### Example Screen

- 1 Room list (thumbnail display)
- 2 Alert display area
- 3 Tool area to configure system settings for each room and perform maintenance
- 4 System display area for each room

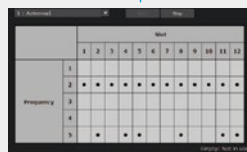


Toggle screens



##### Basic spectrum analyzer

The program monitors the signal strength in the frequency bands near those used for DECT to detect sources such as mobile phone towers that are affecting the system.



##### DECT slot monitor

You can monitor the congestion level of the radio waves used by DECT.



##### Walk tests

You can perform a walk test by walking around with the microphone and checking that the wireless antenna receives a consistent signal from all areas.

Receiver status

Antenna status

Microphone status

- Power
- Battery level
- Signal strength
- Volume

Receiver		Ext. 1	
Receiver	Connected	Ext. 1	Connected
Antenna			
1	Connected	2	Disconnected
3	Disconnected	4	Disconnected
5	Disconnected	6	Disconnected
7	Disconnected	8	Disconnected
Microphone			
No.	Power	Batt.	Recv. Audio
1	ON	Full	ON
2	ON	Full	ON
3	OFF	Full	OFF
4	OFF	Full	OFF
5	OFF	Full	OFF
6	OFF	Full	OFF
7	OFF	Full	OFF
8	OFF	Full	OFF

### Easy System Design Tool Software

- This tool helps you design your system before purchasing it.
- You can enter information such as the layout of your room(s) and the number of microphones you need and simulate signal interference.



**More Information** ▶ [na.panasonic.com/us/audio-video-solutions/professional-audio](http://na.panasonic.com/us/audio-video-solutions/professional-audio)

**Email** ▶ [proaudio@us.panasonic.com](mailto:proaudio@us.panasonic.com)



#### \* Trademarks and registered trademarks

- All other trademarks identified herein are the property of their respective owners.

**Panasonic**  
**CONNECT**

**Panasonic Connect Co., Ltd.**

4-1-62 Minoshima, Hakata-ku, Fukuoka City 812-8531, Japan

#### Important

- Safety Precaution : Carefully read the Important Information, Installation Guide and operating instructions before using this product.
- Panasonic cannot be responsible for the performance of the network and/or other manufacturers' products used on the network.
- Masses and dimensions are approximate.
- Specifications are subject to change without notice.

[Countries and Regions]

U.S.A.

+1 877 803 8492

All information included here is valid as of November 2022.