

# Rittal – The System.

Faster – better – everywhere.

## Fan tray – DK 7968.035

Date : Jan 22, 2017

ENCLOSURES

POWER DISTRIBUTION

CLIMATE CONTROL

IT INFRASTRUCTURE

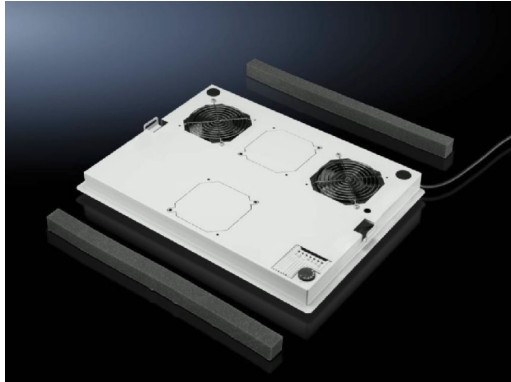
SOFTWARE & SERVICES

FRIEDHELM LOH GROUP



# Fan tray – DK 7968.035

created: 22.01.2017 build on [www.rittal.com/us-en](http://www.rittal.com/us-en)



## Product description

**Description:** The fan mounting plate can be retro-fitted in all TS 8 network enclosures from above. The plate is mounted at the front of the enclosure, while the rear section is left free for cable entry. A rubber clamping profile is supplied loose for optional sealing at the rear. The following combinations are also possible: Solid roof plate raised with 20 or 50 mm roof spacers. Roof plate for cable entry raised with 20 or 50 mm roof spacers. Vented roof plate for cable entry. Can only be used in conjunction with the large pivoting frame from an enclosure depth of 800 mm, and in conjunction with a roof plate for cable entry from 1000 mm.

**Color:** RAL 7035

**Supply includes:** 2 fans  
Additional cutouts for more fans.  
1 thermostat  
Rubber cable clamp strip  
Thermostat and fan fully wired to connection cable (3.5 m).

**Note:** Not suitable for crane transportation  
Not suitable for use on the 19" mounting frame.

## Product features

**Air throughput per fan (unimpeded air flow):** At 50 Hz: 160 m<sup>3</sup>/h (94.2 cfm)  
At 60 Hz: 180 m<sup>3</sup>/h (105.9 cfm)

**Rated operating voltage:** 230 V, 1~, 50 Hz/60 Hz

**Installation options:** In a solid roof plate raised with 20 or 50 mm roof spacers  
In a roof plate for cable entry raised with 20 or 50 mm roof spacers  
In a vented roof plate for cable entry

**Suitable for enclosure** 600 x 800

<b>width/depth:</b>	600 x 1000 600 x 1200
<b>Temperature range:</b>	Operation (environment): +5°C...+55°C
<b>Output per fan:</b>	At 50 Hz: 15 W At 60 Hz: 14 W
<b>Number of fans:</b>	2
<b>Number of fans (max.):</b>	6
<b>Packaging unit:</b>	1 pc(s).
<b>Weight/packaging unit:</b>	5.12 kg (11.3 lb.)
<b>EAN:</b>	4028177168930
<b>Customs tariff number:</b>	84149000
<b>ETIM 6.0:</b>	EC000331
<b>ETIM 5.0:</b>	EC000331
<b>eCl@ss 8.0/8.1:</b>	27189272
<b>eCl@ss 7.0/7.1:</b>	27189272
<b>eCl@ss 6.0/6.1:</b>	27189272
<b>eCl@ss 5.1/5.1.4:</b>	27180705
<b>Approvals</b>	
<b>Approvals:</b>	Approval overview
<b>Declarations:</b>	Declaration of conformity