

Han 24HPR-HSM angled-3xM25/1xM20-SL

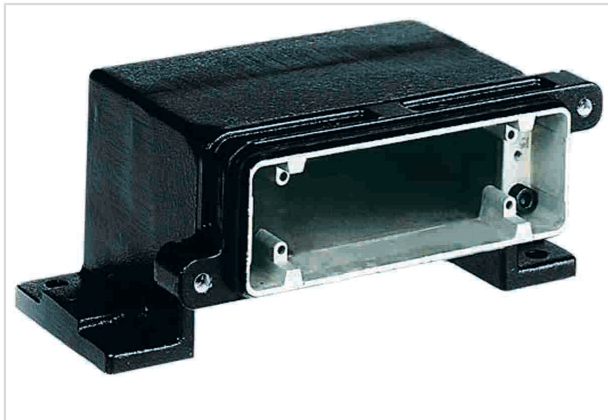


Image is for illustration purposes only. Please refer to product description.

Part number	19 40 024 0971
Specification	Han 24HPR-HSM angled-3xM25/1xM20-SL
HARTING eCatalogue	https://b2b.harting.com/19400240971

Identification

Category	Hoods/Housings
Series of hoods/housings	Han [®] HPR
Type of hood/housing	Surface mounted housing
Description of hood/housing	Horizontal version

Version

Locking type	Screw locking
Size	24 B
Version	Top entry
Cable entry	3x M25 1x M20
Field of application	Hoods/housings for harsh outdoor environments

Technical characteristics

Tightening torque (screw locking)	4 Nm
Limiting temperature	-40 ... +125 °C
Degree of protection acc. to IEC 60529	IP65 IP68 IP69 / IPX9K acc. to ISO 20653
Type rating acc. to UL 50 / UL 50E	4 4X 12



Pushing Performance

Material properties

Material (hood/housing)	Aluminium die-cast Corrosion resistant
Surface (hood/housing)	Powder-coated
Colour (hood/housing)	RAL 9005 (jet black)
Material (seal)	NBR
Material (locking)	Stainless steel
RoHS	compliant
ELV status	compliant
China RoHS	e
REACH Annex XVII substances	No
REACH ANNEX XIV substances	No
REACH SVHC substances	No

Specifications and approvals

Approvals	DNV GL
UL / CSA	UL 1977 ECBT2.E235076 CSA-C22.2 No. 182.3 ECBT8.E235076
CE	Yes

Commercial data

Packaging size	1
Net weight	1,240 g
Country of origin	Germany
European customs tariff number	85389099
eCl@ss	27440202 Shell for industrial connectors