

# Rittal – The System.

Faster – better – everywhere.

## Lock inserts – SZ 2460.650

Date : Jan 22, 2017

ENCLOSURES

POWER DISTRIBUTION

CLIMATE CONTROL

IT INFRASTRUCTURE

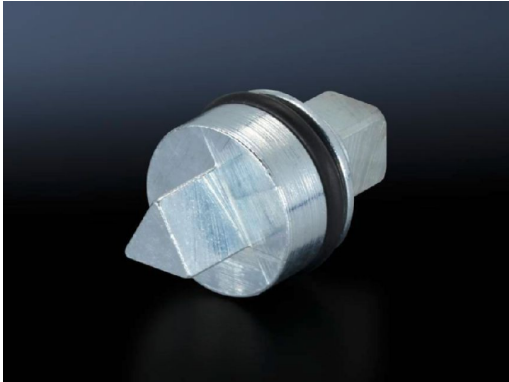
SOFTWARE & SERVICES

FRIEDHELM LOH GROUP



# Lock inserts – SZ 2460.650

created: 22.01.2017 build on www.rittal.com/us-en



## Product description

**Material:** Die-cast zinc

## Product features

**Version:** A

**Suitable for:**

- Enclosure type: EB
- Enclosure type: BG with cam
- Enclosure type: AE with cam
- Enclosure type: Basic AE with cam
- Enclosure type: Wall-mounted housing AE with cam
- Enclosure type: AE with 3-point lock
- Enclosure type: Basic AE with 3-point lock
- Enclosure type: Wall-mounted housing AE with 3-point lock
- Enclosure type: PC enclosure for keyboard drawer or fold-out tray
- Enclosure type: TP desk unit and top piece
- Enclosure type: TP pedestals
- Enclosure type: One-piece console TP console cover
- Enclosure type: One-piece console TP console door
- Enclosure type: TP universal console
- Enclosure type: AE with 3-point lock, stainless steel
- Enclosure type: Basic AE with 3-point lock, stainless steel

**Dimensions:** Length: 27 mm (1.1 ")

**Installation in handle system:**

- Ergoform-S handle Standard
- Ergoform-S handle Standard for KS plastic enclosures
- Adjacent door latch

**Lock Insert:** 6.5 mm triangular (CNOMO)

**Packaging unit:** 1 pc(s).

<b>Weight/packaging unit:</b>	0.02 kg (0 lb.)
<b>EAN:</b>	4028177220331
<b>Customs tariff number:</b>	83024900
<b>ETIM 6.0:</b>	EC000743
<b>ETIM 5.0:</b>	EC000743
<b>eCl@ss 8.0/8.1:</b>	27409218
<b>eCl@ss 7.0/7.1:</b>	27409218
<b>eCl@ss 6.0/6.1:</b>	27409218
<b>eCl@ss 5.1/5.1.4:</b>	27189256

## Approvals

<b>Certificates:</b>	EAC
----------------------	-----