

Fire-Rated Poke-Throughs

10" SystemOne Series

Kit



Features

- (1) S1R10PTFIT fitting and (1) S1R10CVRBRZ Antique Bronze Plated Recessed Cover
- (2) S1R10PSPZ PreWired Duplex with Leads and (2) S1R10PSPREPBRKT Perimeter Brackets
- (4) S1R10CBFPT Center Feed Thru, (3) S1R10PBFBLANK Perimeter Blank Bottom Plate, and (1) S1R10PBF075 Perimeter 3/4" EMT Bottom Feed Plates
- (1) S1R10CENTERDIV Center and (1) S1R10PERIMDIV Perimeter Dividers

Ordering Information

Description	UPC Number	Catalog Number
SystemOne, 10" Series, Kit, Includes S1R10PTFIT, S1R10CVRBRZ, S1R10PSPZ, S1R10PSPREPBRKT, S1R10CBFPT, S1R10PBFBLANK, S1R10PBF075, S1R10CENTERDIV, S1R10PERIMDIV	783585548296	S1R10PTZBRZ

Listings

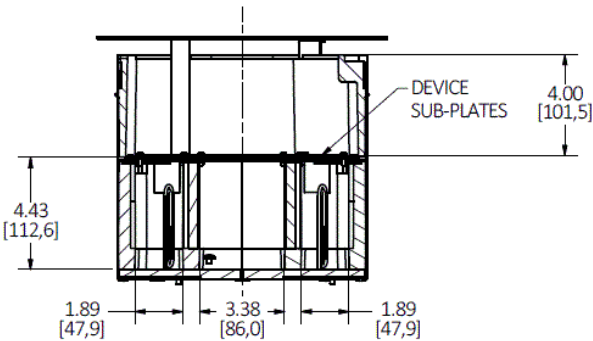
cULus Listed as Fittings and Outlet Boxes, also Classified for Fire Resistance
ULC Listed as Fittings and Outlet Boxes for Service Penetration
UL Scrub Water Compliant
ADA Compliant

Specifications

Cover Material	Cast Aluminum
Cover Finish	Antique Bronze Plated
S1R10PTFIT Fitting Materials	Pre-Galvanized Steel & Intumescent
Material- Bottom Feed Plates and Metallic Dividers	Pre-Galvanized Steel
Sub-Plates and Brackets	Pre-Galvanized Steel- White Painted
Maximum Copper Cross Section- Center Chamber	0.0978 sq. in.
Maximum Copper Cross Section- Perimeter Chamber	0.0408 sq. in.

Performance

Cover Connection Type	Recessed
Cover Load Rating	1,000 lbs Static Load Through 3" Diameter Mandrel
Drilled or Formed Concrete Hole Size	10.00" to 10.12"
Fire Rating	1-2 Hour rated
Minimum Concrete Floor Thickness	2.25" (57.2)



Complementary Products

Pre-Pour Tube	S1R10PPT
Egress Door Brushes	S1R10CVRBRUSH
Center Sub-Plates	S1R10CSP Series
Perimeter Sub-Plates	S1R10PSP Series
Center Bottom Feed Plates	S1R10CBF Series
Perimeter Bottom Feed Plates	S1R10PBF Series

Online Resources

Customer Use Drawing
eCatalog
Installation Instructions

