

Rittal – The System.

Faster – better – everywhere.

Cable entry plates for installation in CM enclosures and TP TopConsole system – CM 5001.229

Date : Jan 22, 2017

ENCLOSURES

POWER DISTRIBUTION

CLIMATE CONTROL

IT INFRASTRUCTURE

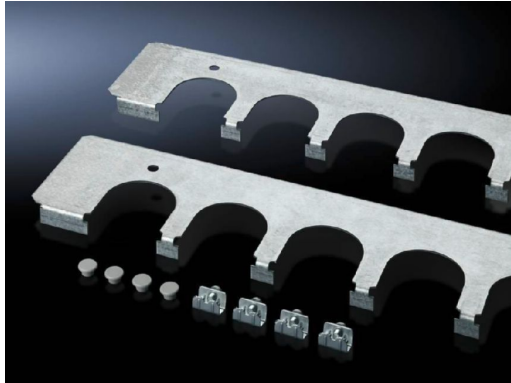
SOFTWARE & SERVICES

FRIEDHELM LOH GROUP



Cable entry plates for installation in CM enclosures and TP TopConsole system – CM 5001.229

created: 22.01.2017 build on www.rittal.com/us-en



Product description

Description:	Secure cable entry in combination with cable grommets and connector grommets. Installed instead of the standard base plates.
---------------------	--

Material:	Carbon steel
------------------	--------------

Surface finish:	Zinc-plated
------------------------	-------------

Supply includes:	Assembly components
-------------------------	---------------------

Product features

Version:	Note: For installation in CM enclosures and TP TopConsole system
-----------------	--

Suitable for:	Enclosure type: CM Enclosure type: TP Width: 1200 mm (47 ")
----------------------	---

Cable entry:	Number of cut-outs: 6
---------------------	-----------------------

Packaging unit:	1 pc(s).
------------------------	----------

Weight/packaging unit:	0.66 kg (1.5 lb.)
-------------------------------	-------------------

EAN:	4028177523333
-------------	---------------

Customs tariff	73269098
-----------------------	----------

number:	
ETIM 6.0:	EC002620
ETIM 5.0:	EC002620
eCl@ss 8.0/8.1:	27189261
eCl@ss 7.0/7.1:	27400604
eCl@ss 6.0/6.1:	27400604
eCl@ss 5.1/5.1.4:	27189222

2017 © Rittal Corporation