

- > **Port size: 1/4" to 3/8"**
(ISO G/PTF)
- > **Excelon® Plus design**
allows in-line installation
or modular installation with
other Excelon® Plus products
- > **3/2 way function**
- > **Threaded exhaust port**
- > **Lockable in closed**
position with padlock



Technical features

Medium:

Compressed air only

Maximum supply pressure:

246 psi (17 bar)

Port size:

G1/4, G3/8, 1/4 PTF, 3/8 PTF

Flow:

96 scfm (45 dm³/s) at port size 1/4",
86 scfm (41 dm³/s) at port size 3/8",
operating pressure 91 psi (6.3 bar)
and a Δp : 7.25 psi (0.5 bar) drop
from set.

Exhaust flow: 3.26 scfm (1.54 dm³/s)

Ambient/Media temperature:

-4 to +149°F (-20 to +65°C)

Air supply must be dry enough
to avoid ice formation at
temperatures below +35°F (+2°C).

Materials:

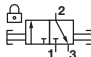
Body: Die cast aluminium

Body covers: ABS

Elastomers: NBR

Valve: Brass

Technical data T82T

Symbol	Port Size (PTF)	Function	Valve Type	Exhaust port forms	Weight lbs (kg)	Model
	1/4	3/2	Ball valve	Exhaust port threaded PTF 1/4	0.44 (0.20)	T82T-2AA-B1N
	3/8	3/2	Ball valve	Exhaust port threaded PTF 1/4	0.44 (0.20)	T82T-3AA-B1N

Option selector

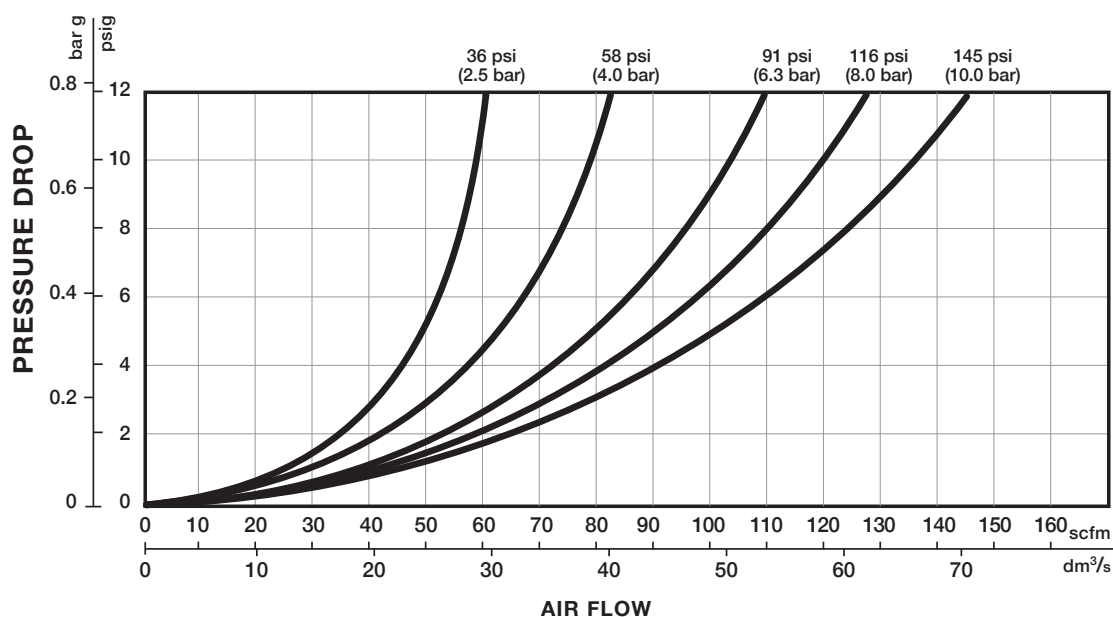
T82T-★★A-B1N

Function	Substitute
3/2	T

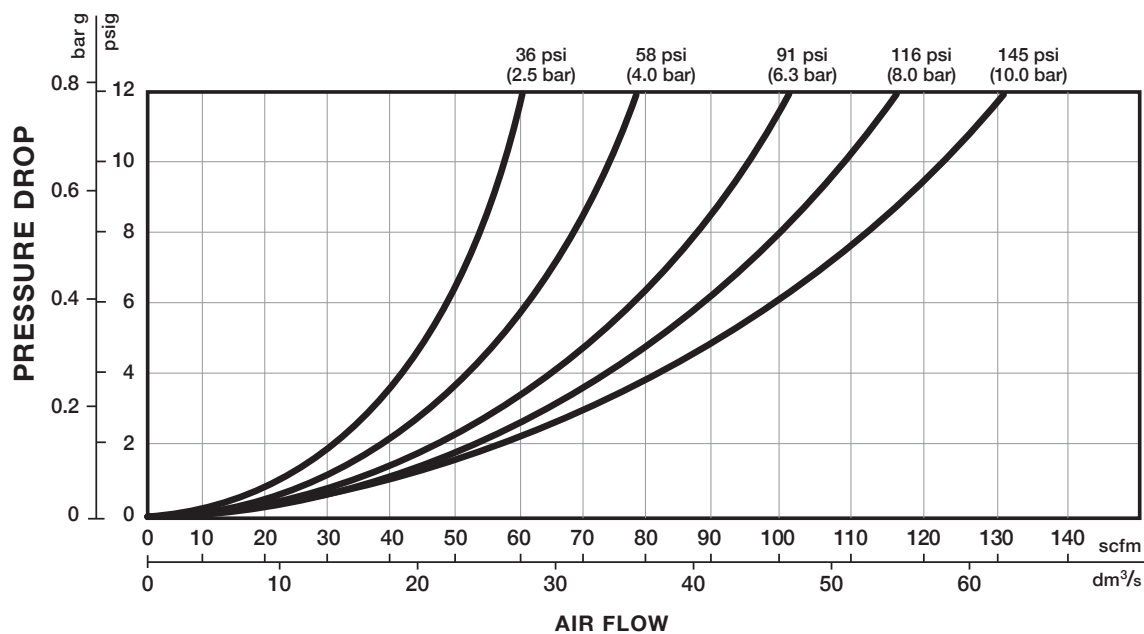
Thread form	Substitute
PTF A	A
ISO G	G
Port size	Substitute
1/4"	2
3/8"	3

Flow characteristics

Port size: 1/4"



Port size: 3/8"



Accessories

Wall mounting bracket


page 4

820024-50KIT

Quikclamp®


page 4

820014-51KIT

Quikclamp® with bracket assembled


page 4

820014-52KIT

Pressure sensing block 1/4 PTF


page 5

820016-50KIT

Pressure sensing block G1/4


page 5

820016-51KIT

Full flow porting block 3/8 PTF


page 5

820028-50KIT

Full flow porting block G3/8


page 5

820028-53KIT

Pressure switch interface block (18D pressure switch)


page 5

0523109000000000

Pneumatic pressure switch 18D (0,5 ... 8 bar) *1)

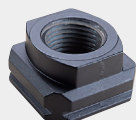

page 5

0881300000000000

Digital pressure switch 51D(-1 ... 10 bar) *2)

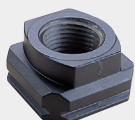

page 5

0860810000000000

Port Adaptors 1/4 PTF


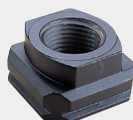
page 6

820015-02KIT

Port Adaptors 3/8 PTF


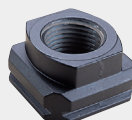
page 6

820015-03KIT

Port Adaptors G1/4


page 6

820015-08KIT

Port Adaptors G3/8


page 6

820015-09KIT

Padlock

Padlock


840055-01KIT

Lockout device


840055-02KIT

Silencer

Porous plastic silencer *3) G1/4


M/S2

Porous plastic silencer *3) 1/4 PTF


C/S2

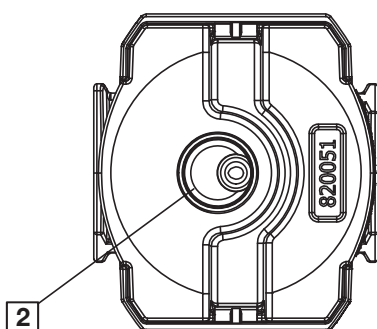
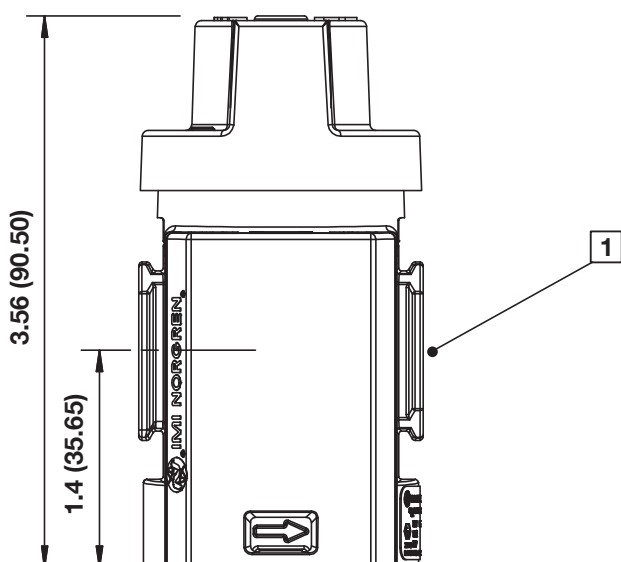
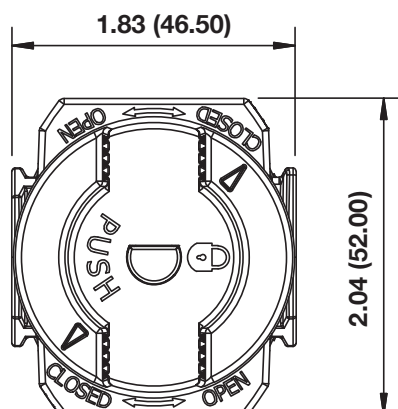
Sintered bronze silencer 1/4 PTF


MS002A

*3) Max. pressure of silencers listed in this data sheet : 145 psi (10 bar). For pressure higher than 145 psi please contact IMI Norgren.

Dimensions

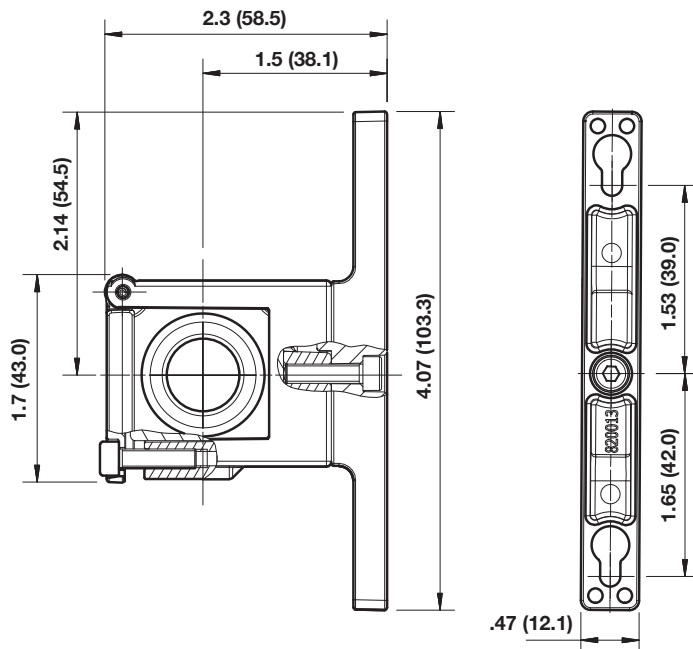
Dimensions in inches (mm)
Projection/Third angle



- 1 Main ports 1/4" or 3/8" ISO G/PTF
- 2 Exhaust Port Rc1/4 or 1/4 PTF

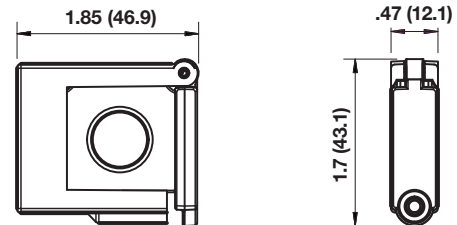
Accessories

Quikclamp® with wall bracket

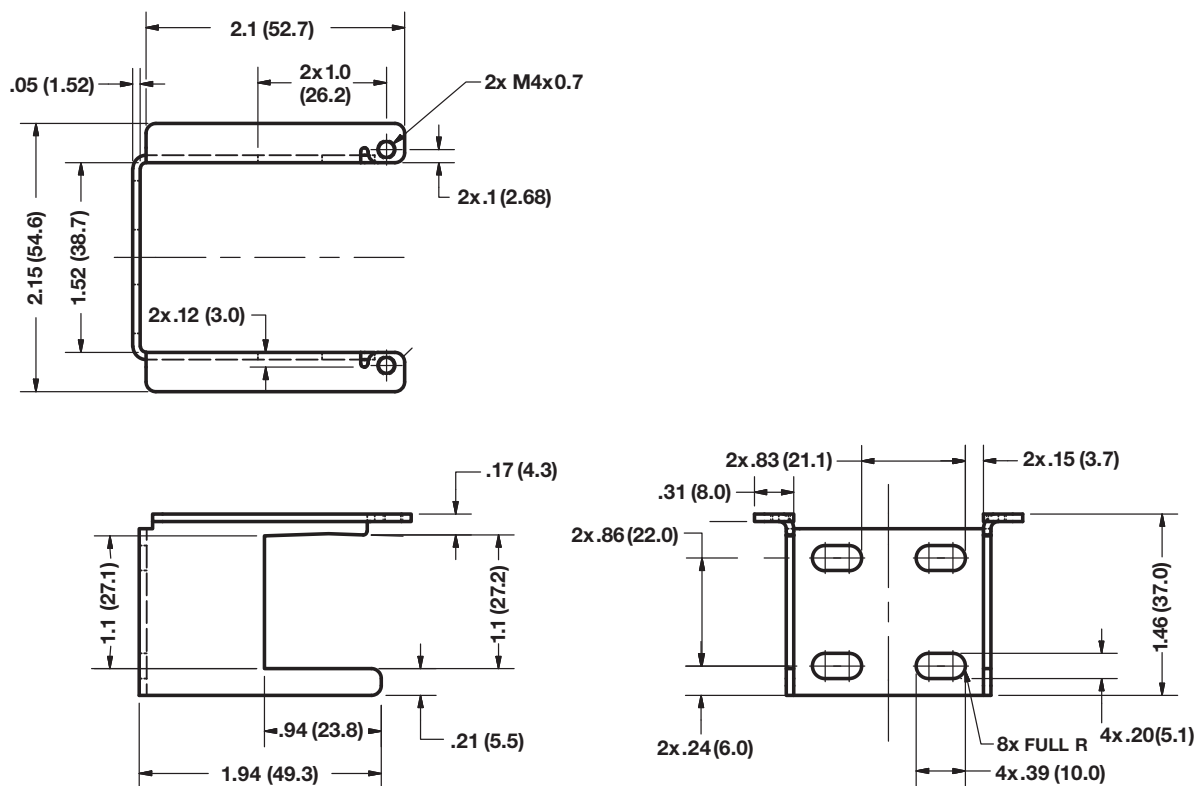


Quikclamp®

Dimensions in inches (mm)
 Projection/Third angle

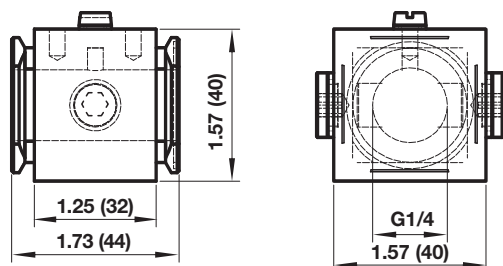


Mounting bracket

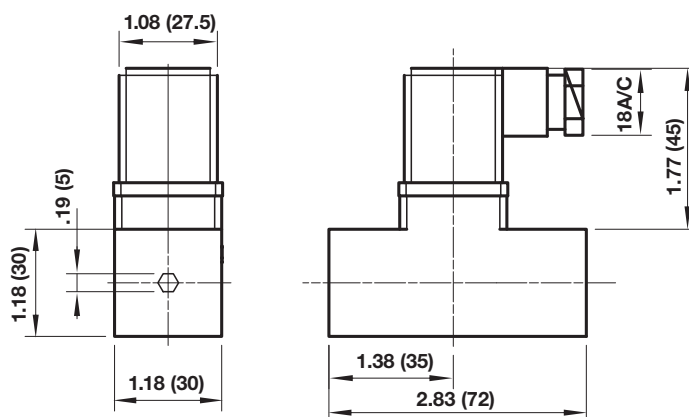


Dimensions in inches (mm)
 Projection/Third angle

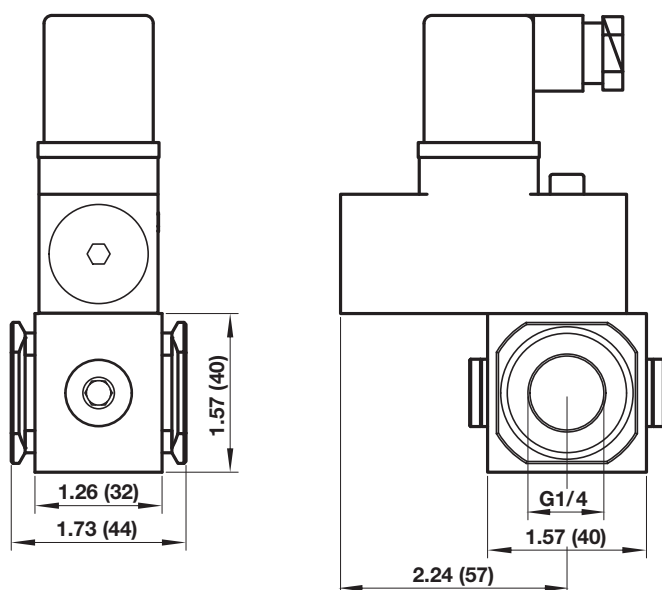
Porting block for 18D pressure switch



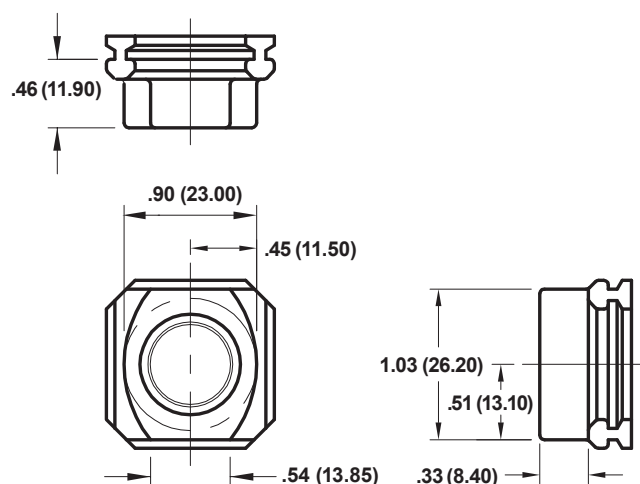
18D Pressure switch



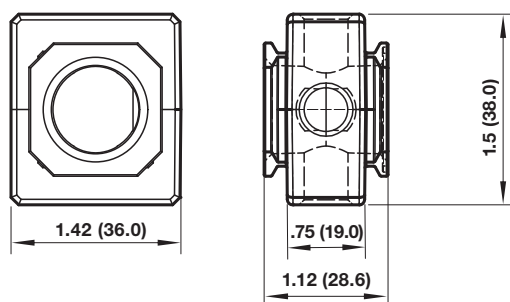
18D Porting block and 18D assembled



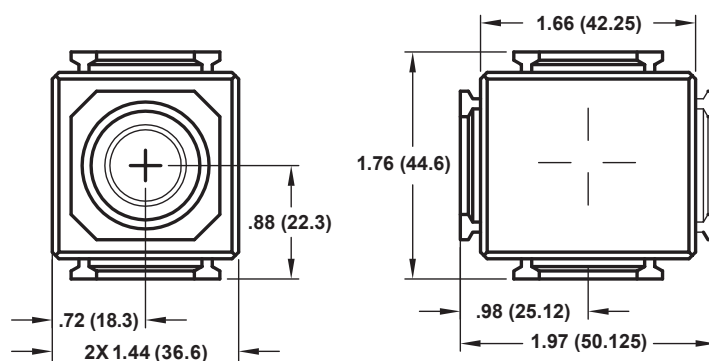
Pipe adaptor



Pressure sensing block



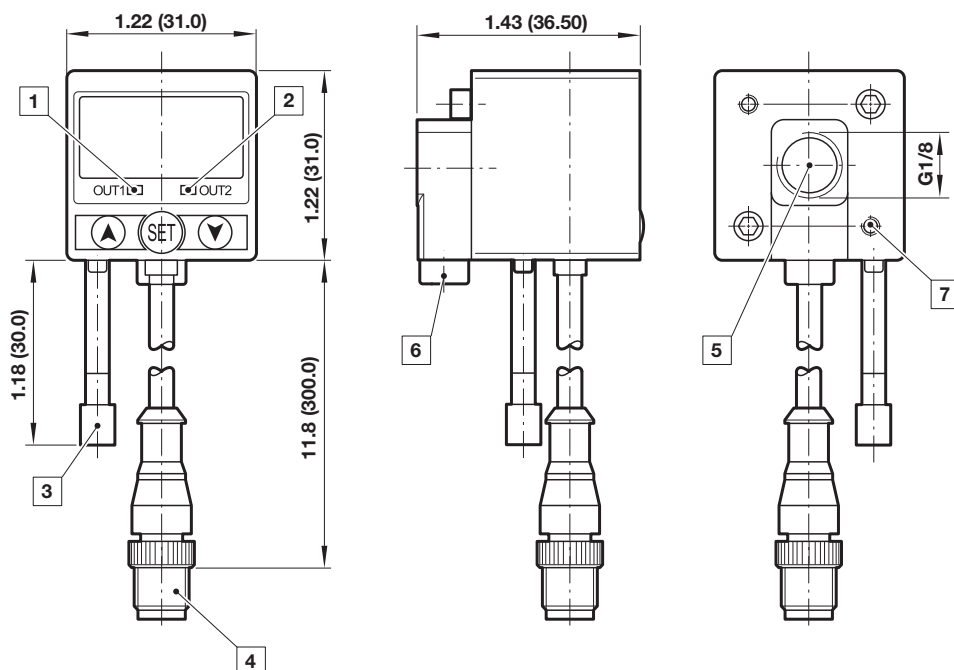
Full flow porting block



Dimensions in inches (mm)
 Projection/Third angle



51D Pressure switch - digital



- 1 Switch OUT 1, green LED
- 2 Switch OUT 2, red LED
- 3 Dustproof protector
- 4 Connector M12 x 1
- 5 Inlet port
- 6 Alternative inlet port G1/8 plugged
- 7 Thread for mounting screw

Warning

These products are intended for use in industrial compressed air systems only. Do not use these products where pressures and temperatures can exceed those listed under »Technical features/data«. Before using these products with fluids other than those specified, for non-industrial applications, life-support systems or other applications not within published specifications, consult IMI Precision Engineering, Norgren Ltd.

Through misuse, age, or malfunction, components used in fluid power systems can fail in various modes. The system designer is warned to consider the failure modes of all component parts used in fluid power systems and to provide adequate safeguards to prevent personal injury or damage to equipment in the event of such failure. System designers must provide a warning to end users in the system instructional manual if protection against a failure mode cannot be adequately provided. System designers and end users are cautioned to review specific warnings found in instruction sheets packed and shipped with these products.