



Figure similar

Enclosed soft starter, Controller 3RW44356BC34, Std duty rating 30HP @200V, Std duty current rating 117A Control voltage 115Vac Combination type, 150A circuit breaker, Enclosure NEMA type 1, Indoor general purpose use

product brand name
design of the product
special product feature

Class 74
Enclosed soft starter with motor circuit protector
Control transformer, built-in overload relay and bypass contactor included.

General technical data

weight [lb] 146 lb
Height x Width x Depth [in] 50 × 25 × 20 in
touch protection against electrical shock NA for enclosed products
installation altitude [ft] at height above sea level maximum 6560 ft
ambient temperature [°F]
 • during storage -22 ... +149 °F
 • during operation -4 ... +104 °F
ambient temperature
 • during storage -30 ... +65 °C
 • during operation -20 ... +40 °C
country of origin USA

Power and control electronics

manufacturer's article number of soft starter [3RW44356BC34](#)
number of poles for main current circuit 3
design of power semiconductors (thyristors) for soft starter control 3 controlled phases
operating range factor supply voltage rated value 0.85 ... 1.1
operating range factor of control voltage rated value 0.85 ... 1.1
operating condition for standard duty Class 10, standard-compliant startup
operating condition for severe duty Class 20 severe duty (350% of motor FLA for 20 seconds)

Features and functions

ramp-up (soft starting)/ramp-down (soft stop) Yes
starting voltage [%] 20 ... 100 %
stopping voltage [%] 20 ... 100 %
voltage ramp Yes
ramp-up time 1 ... 360 s
ramp-down time 1 ... 360 s
torque control Yes
starting torque [%] 20 ... 100 %
stopping torque [%] 20 ... 100 %
torque limitation [%] 20 ... 200 %
ramp time of torque 1 ... 360 s
adjustable current limitation Yes
creep speed in both directions of rotation Yes
pump ramp down Yes
integrated bypass contact system Yes

external isolation contactor	No
intrinsic device protection	Yes
overload protection	Yes
trip class	CLASS 5 / 10 / 15 / 20 / 30
reset function	Manual and automatic
remote reset function	Yes
thermistor motor protection	Yes
inside-delta circuit	Yes
breakaway pulse	Yes
DC braking	Yes
combined braking	Yes
motor heating	Yes
configuration of control input 1	Factory set as START MOTOR
configuration of control input 2	programmable
configuration of control input 3	programmable
configuration of control input 4	TRIP RESET, preset
configuration of relay output 1	ON-TIME MOTOR, preset
configuration of relay output 2	programmable
configuration of relay output 3	programmable
configuration of relay output 4	GROUP ERROR, preset
display version	Graphic display
operating measured value display	Yes
product extension optional human machine interface module	Yes
type of communication optional	With optional Profibus or Profinet
error logbook	Yes
event list	Yes
slave pointer function	Yes
trace function	Yes
number of parameter sets	3
engineering software (Soft Starter ES)	Yes
disconnecter functionality	Yes
Contactor	
size of contactor	NA
Coil	
type of voltage of the control supply voltage	AC
control supply voltage	
• at AC at 50 Hz rated value	115 V
• at AC at 60 Hz rated value	115 V
Enclosure	
degree of protection NEMA rating	1
degree of protection NEMA rating of the enclosure	NEMA Type 1
design of the housing	indoors, usable on a general basis
type of cooling	None
Circuit Breaker	
type of the motor protection	Motor circuit protector (magnetic trip only)
operational current of motor circuit breaker rated value	150 A
adjustable current response value current of instantaneous short-circuit trip unit	800 ... 1500 A
Mounting/wiring	
mounting position	Vertical
fastening method	Surface mounting and installation
wire length between motor starter and motor maximum	500 m
type of electrical connection for supply voltage line-side	Box lug
type of connectable conductor cross-sections at line-side at AWG cables single or multi-stranded	1x (6 AWG ... 350 Kcmil) or 1x (4 AWG ... 350 Kcmil)
temperature of the conductor for supply maximum permissible	75 °C
material of the conductor for supply	AL or CU
type of electrical connection for load-side outgoing feeder	Box lug
tightening torque [lbf·in] for load-side outgoing feeder	90 ... 110 lbf·in
type of connectable conductor cross-sections at AWG cables for load-side outgoing feeder single or multi-stranded	7 ... 2/0 AWG (front only) or 6 ... 2/0 AWG (back only) or 2x 1/0 AWG (both front & back)

temperature of the conductor for load-side outgoing feeder maximum permissible
 material of the conductor for load-side outgoing feeder
 type of electrical connection for auxiliary and control circuit
 tightening torque [lbf·in] for auxiliary and control contacts with screw-type terminals
 type of connectable conductor cross-sections at AWG cables for auxiliary and control contacts
 temperature of the conductor for auxiliary and control contacts maximum permissible
 material of the conductor for auxiliary and control contacts

75 °C
 CU
 Screw-type terminals
 7 ... 10 lbf·in
 2x (20 ... 14 AWG)
 75 °C
 CU

Short-circuit current rating

design of the short-circuit trip
 maximum short-circuit current breaking capacity (Icu)
 • at 240 V
 • at 480 V
 • at 600 V
 certificate of suitability

Motor circuit protector (magnetic trip only)
 100 kA
 100 kA
 0 kA
 NEMA ICS 2; UL 508A

Further information

Industrial Controls - Product Overview (Catalogs, Brochures,...)

www.usa.siemens.com/iccatalog

Industry Mall (Online ordering system)

<https://mall.industry.siemens.com/mall/en/us/Catalog/product?mlfb=US2:74HT36BFAP>

Service&Support (Manuals, Certificates, Characteristics, FAQs,...)

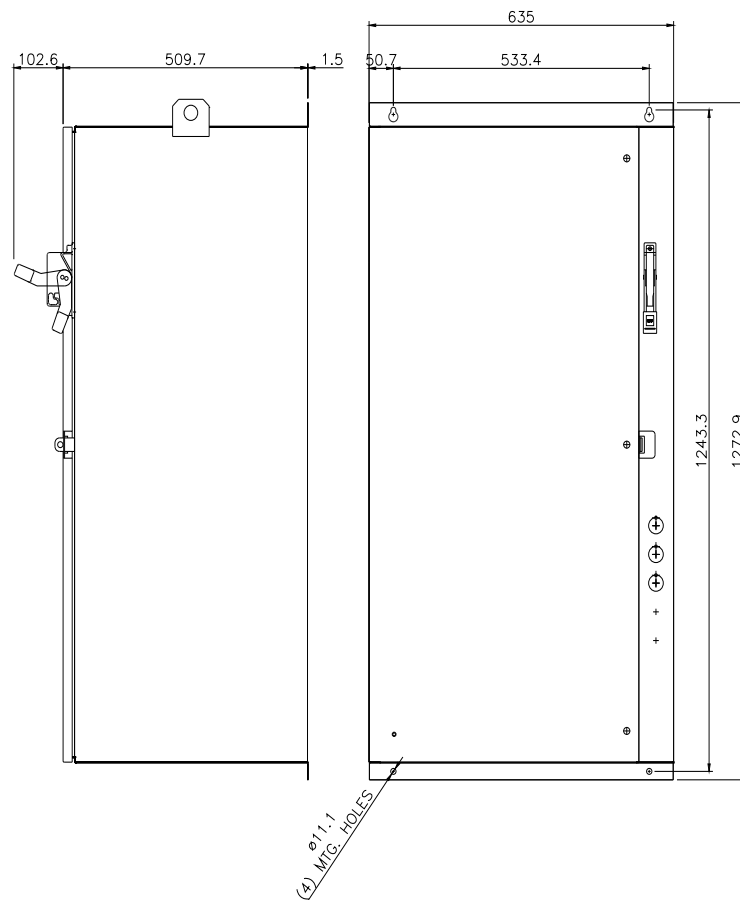
<https://support.industry.siemens.com/cs/US/en/ps/US2:74HT36BFAP>

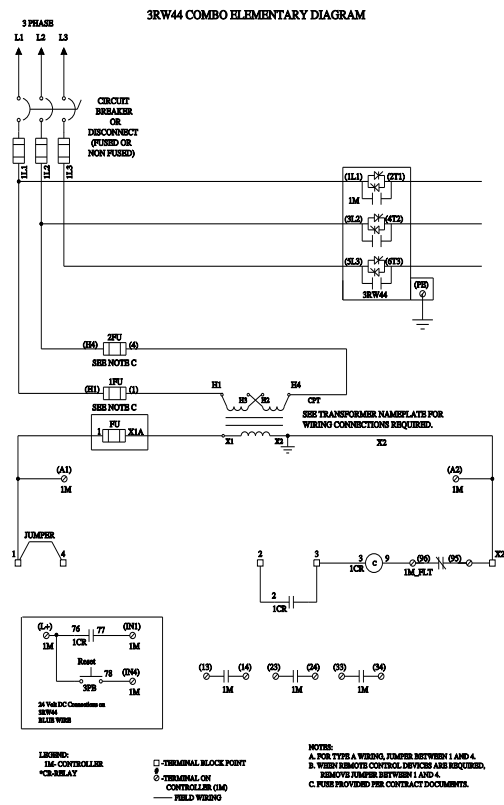
Image database (product images, 2D dimension drawings, 3D models, device circuit diagrams, EPLAN macros, ...)

http://www.automation.siemens.com/bilddb/cax_de.aspx?mlfb=US2:74HT36BFAP&lang=en

Certificates/approvals

<https://support.industry.siemens.com/cs/US/en/ps/US2:74HT36BFAP/certificate>





D69015H16

last modified:

1/25/2022