

# Rittal – The System.

Faster – better – everywhere.

## Cable entry plates for installation in CM enclosures and TP TopConsole system – CM 5001.226

Date : Jan 22, 2017

ENCLOSURES

POWER DISTRIBUTION

CLIMATE CONTROL

IT INFRASTRUCTURE

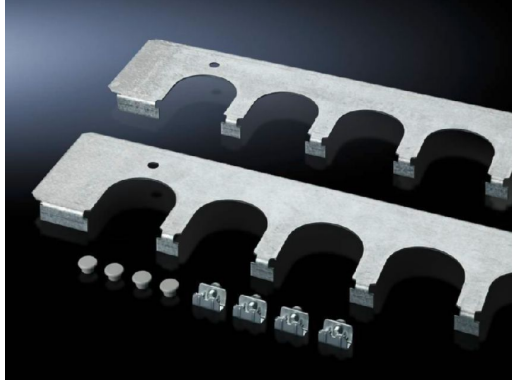
SOFTWARE & SERVICES

FRIEDHELM LOH GROUP



# Cable entry plates for installation in CM enclosures and TP TopConsole system – CM 5001.226

created: 22.01.2017 build on [www.rittal.com/us-en](http://www.rittal.com/us-en)



## Product description

<b>Description:</b>	Secure cable entry in combination with cable grommets and connector grommets. Installed instead of the standard base plates.
---------------------	--

<b>Material:</b>	Carbon steel
------------------	--------------

<b>Surface finish:</b>	Zinc-plated
------------------------	-------------

<b>Supply includes:</b>	Assembly components
-------------------------	---------------------

## Product features

<b>Version:</b>	Note: For installation in CM enclosures and TP TopConsole system
-----------------	--

<b>Suitable for:</b>	Enclosure type: CM Enclosure type: TP Width: 600 mm (24 ")
----------------------	--

<b>Cable entry:</b>	Number of cut-outs: 5
---------------------	-----------------------

<b>Packaging unit:</b>	1 pc(s).
------------------------	----------

<b>Weight/packaging unit:</b>	0.58 kg (1.3 lb.)
-------------------------------	-------------------

<b>EAN:</b>	4028177523302
-------------	---------------

<b>Customs tariff</b>	73269098
-----------------------	----------

<b>number:</b>	
<b>ETIM 6.0:</b>	EC002620
<b>ETIM 5.0:</b>	EC002620
<b>eCl@ss 8.0/8.1:</b>	27189261
<b>eCl@ss 7.0/7.1:</b>	27400604
<b>eCl@ss 6.0/6.1:</b>	27400604
<b>eCl@ss 5.1/5.1.4:</b>	27189222

2017 © Rittal Corporation