

Twist-Lock® Devices
20A, 250V AC, 2 Pole, 3 Wire Grounding
Watertight Safety-Shroud® Flanged Inlet

Features

- UL type 4X environmental seal while in use and when closed
- High impact, thermoplastic housing for heavy-duty industrial environments
- Alignment arrows with lock and unlock symbols provide a visual indication that devices are properly connected
- Catalog number and color coded voltage rating are visible even when in use

Ordering Information

Description	Device Color	UPC	Catalog Number
Gray PBT housing and flange	Gray	783585231143	HBL2325SWR

Listings

Listed to UL 498
Fed.Spec. W-C-596
Certified to CSA Standard No.42
UL Listed, CSA Certified to Type 4, 4X and Type 12

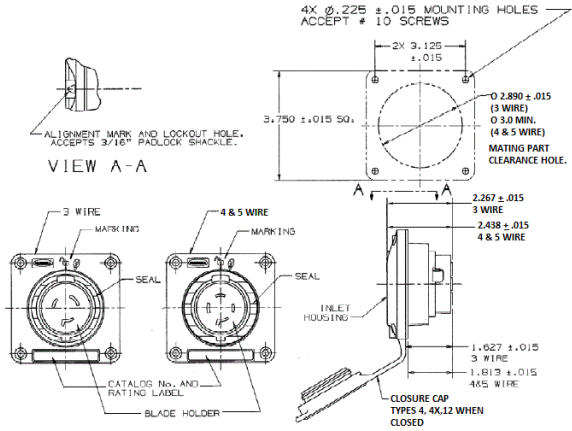
Specifications

Housing	PBT
Blades	Brass
Terminal Retainer	Clear polycarbonate
Terminal Screws	#10-32 Brass (Phillips / Slotted / Robertson)

Performance

Electrical	
Current Interrupting	Certified for current interrupting at full rated current
Dielectric Voltage	Withstands 2,000V minimum
Mechanical	
Terminal Accommodation	#16 AWG - #8 AWG solid or stranded copper wire only.
Terminal Identification	Terminals identified in accordance with UL 498
Environmental	
Flammability	V0 per UL94 or CSA 22.2 No.0.17
Moisture Resistance	Type 4, 4X, 12, IP66 suitability
Operating Temperatures	Maximum Continuous 75°C; Minimum -40°C (w/o impact)

HUBBELL



Accessories

Watertight Safety Shroud Connector	HBL2323SW
Non-Metallic Backbox	BB2030N
2-Gang Weatherproof Box Adapter Plate	HBL2030AP

Resources

eCatalog

