

DATA SHEET



USB-C Travel Dock with Device Charging and Hub

Connect a USB-C device to a display while charging from a mobile power bank or connect to two USB devices and wired Ethernet

OVERVIEW

The USB-C Travel Dock with Device Charging and Hub is the perfect solution for connecting a USB-C device to an HDMI, DisplayPort, or VGA display when in the office or on the go. Supporting HDMI and DisplayPort resolutions up to 4K at 60Hz--while also delivering power--enables the USB-C Travel Dock with Device Charging and Hub to meet your connectivity needs and handle critical tasks so that you can rest easy knowing that you have the connection you need. The modular system consists of three parts: Travel Dock Base, Power Bank, and Hub.

The Travel Dock is a great means to connect to nearly any display for that big meeting or presentation. The Dock is purposefully engineered to allow a USB-C enabled computer or tablet to connect to a display with HDMI, VGA, or DisplayPort inputs and features a USB Type-C port with power delivery.

The included USB-C Power Bank puts power within reach when those power hungry devices need it the most. With a capacity of 10,200mAh, the high grade lithium battery is able to provide multiple charges for most smartphones or a partial charge for larger devices, like a laptop or tablet. Simply attach the Power Bank to the Travel Dock Base and provide power to the connected source device so that you can charge while the port is occupied with video connection, or use it by itself to charge your device. The LED lights on the Power Bank will indicate when it needs to be recharged. Connect a USB-C power source to the Travel Dock to provide the necessary power for charging the Power Bank.

The USB-C Connectivity Hub brings additional connections to the Travel Dock to meet all connectivity needs. The Hub is equipped with a USB-C port for plugging in mobile devices, two USB-A ports for connecting peripherals or portable storage, and an RJ-45 port for Gigabit Ethernet. Connect a USB-C power source to the Travel Dock to provide the necessary power for the Hub to function.

*Note: The USB-C Power Bank and the Connectivity Hub cannot be connected to the USB-C Travel Dock at the same time.

FEATURES

- Tethered USB-C Male cable for easy connection
- USB-C capability—a reversible, high-power connection
- Maximum VGA resolution: 2048x1536
- HDMI and DisplayPort support up to 4K60
- 5V-20V output quickly charges devices
- 10,200mAh battery power bank
- Gigabit Ethernet

ITEM DESCRIPTION

34061 USB-C Travel Dock with Device Charging and Hub

designed to be better.™



DATA SHEET

SPECIFICATIONS:

USB-C Travel Dock with Device Charging and Hub

ELECTRICAL SPECIFICATIONS

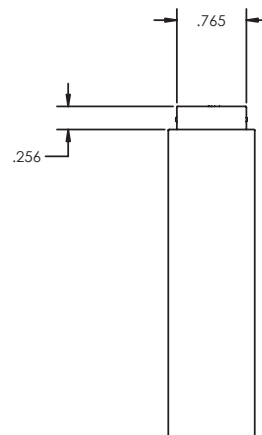
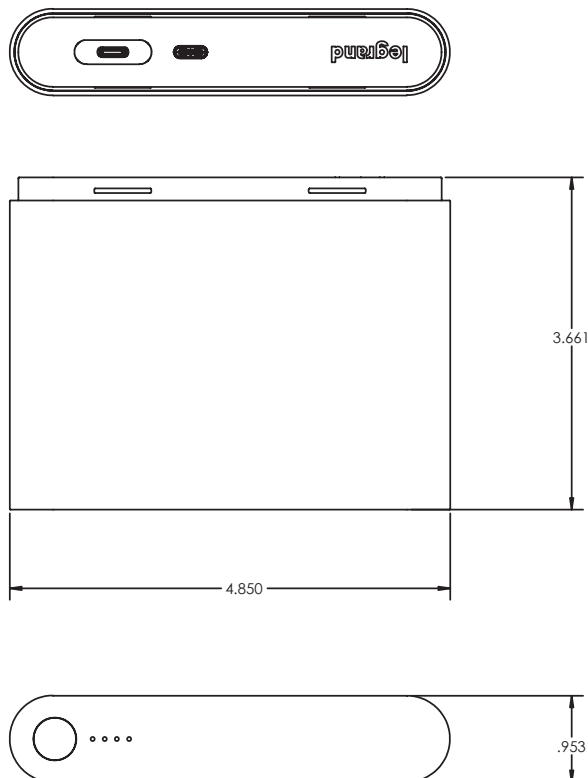
- Output Power: up to 35W
- Output Voltage Range: 5V~20V
- Real Capacity: 32Whr
- Labeled Capacity: 3.7V 10,200mAh
- USB Power: 5V 0.5A per port

PHYSICAL SPECIFICATIONS

- Operating Temperature: 0°C to 40°C (RH = 15~85%)
- Storage Temperature: 0°C to 70°C (RH = 15~85%)

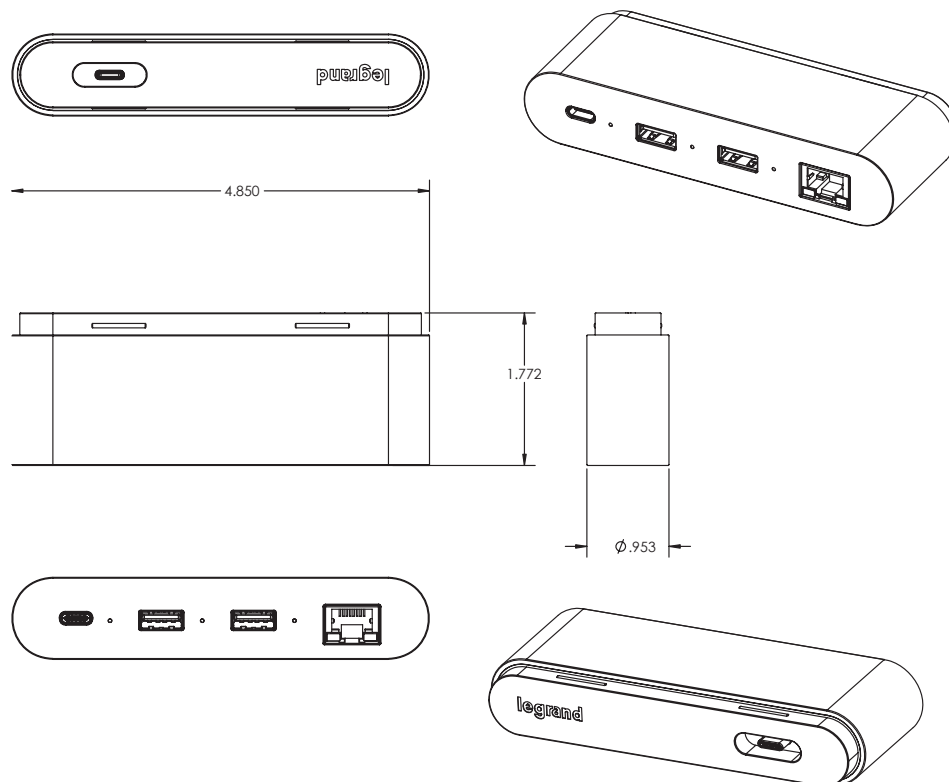
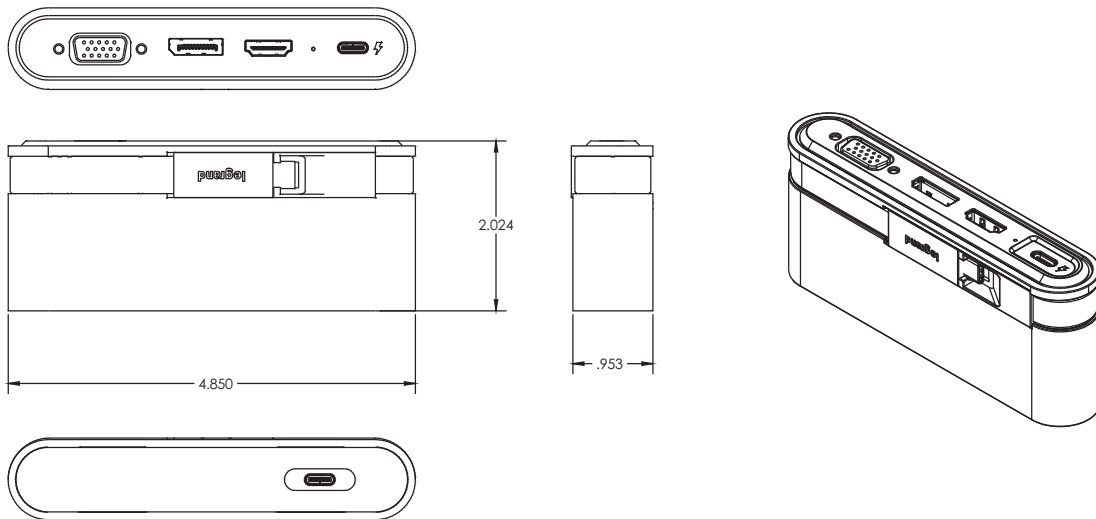
PHYSICAL CHARACTERISTICS

- Travel Dock Dimensions (HxWxD): 5in x 2in x 1in (123.2mm x 51.4mm x 24.2mm)
- Travel Dock Weight: ~3.8 oz.
- Travel Dock Connectors: tethered USB-C male, rear USB-C female, VGA female, DisplayPort female, HDMI female, USB-C female
- Power Bank Dimensions (HxWxD): 5in x 3.5in x 1in (123.2mm x 93mm x 24.2mm)
- Power Bank Weight: ~10.4 oz.
- Hub Dimensions (HxWxD): 5in x 1.75in x 1in (123.2mm x 45mm x 24.2mm)
- Hub Weight: ~3.5 oz.
- Hub Connectors: USB-C port, 2 USB-A female, Ethernet port, front USB-C male



DATA SHEET

SPECIFICATIONS: USB-C Travel Dock with Device Charging and Hub



Legrand, North and Central America

60 Woodlawn Street
West Hartford, CT 06110
1.877.BY.LEGRAND (295.3472)
www.legrand.us